

Ottiu pieces are more than their function, they are designed to become the center of attention while creating a harmonious union with the decorative elements that surround their seductive and curvy lines.

Each piece, made by specialized craftsmen, is treated like a unique work of art; from the foundation in solid wood structure to the finest details of the high-quality finishing.

Conceptually, our products materialize an accessible and comfortable escape from the cosmopolitan chaos, recreating at home a gratifying retreat. The time to enjoy the pleasures of life is so slim that leisure has become more precious than the precious metals or stones.

Each Ottiu design can be personalized to meet your needs and be even more exclusive and unique for your projects in terms of dimensions, finishes, materials and the upholstery, we are ready to please even the most demanding project.

CENTURY COLLECTION

STOOLS & BENCHES / DINING CHAIRS



ANDY STOOL
Page 8



BETTY STOOL
Page 10



COLETTE STOOL
Page 12



AUDREY STOOL
Page 14



AUDREY BENCH
Page 17



CHARISSE STOOL
Page 18



LOUIS STOOL
Page 20



WINFREY BENCH
Page 22



LOUIS DINING CHAIR
Page 24



TIPPI DINING CHAIR
Page 28



LUNA DINING CHAIR
Page 30



KELLY DINING CHAIR
Page 34



ANDRESS DINING CHAIR
Page 38



CARON DINING CHAIR
Page 40



INGRID DINING CHAIR
Page 42



ANITA DINING CHAIR
Page 44



VISCONTI DINING CHAIR
Page 46



WINFREY DINING CHAIR
Page 48



LUPINO DINING CHAIR
Page 50



LUPINO DINING CHAIR
Page 55



BETH DINING CHAIR
Page 56



KATHARINA DINING CHAIR
Page 59



KIM DINING CHAIR
Page 59

BAR CHAIRS



KELLY BAR CHAIR
Page 58



LUNA BAR CHAIR
Page 62



LOUIS BAR CHAIR
Page 64



TIPPI BAR CHAIR
Page 66



WINFREY BAR CHAIR
Page 68



VISCONTI BAR CHAIR
Page 70



CARON BAR CHAIR
Page 72



KIM BAR CHAIR
Page 74



LOUIS TWIN BAR SEAT
Page 79



LUPINO BAR CHAIR
Page 80

ARMCHAIRS



LOREN ARMCHAIR
Page 76



GARLAND ARMCHAIR
Page 78



ELLEN ARMCHAIR
Page 80



KIM ARMCHAIR
Page 82



VISCONTI ARMCHAIR
Page 84



GODARD ARMCHAIR
Page 86



TIPPI ARMCHAIR
Page 88



LOUIS ARMCHAIR
Page 90



SCARLET ARMCHAIR
Page 92



LUPINO ARMCHAIR
Page 94



MARILYN ARMCHAIR
Page 96



GRETA ARMCHAIR
Page 96



DEBBIE ARMCHAIR
Page 96

TWIN SEAT / CHAISE LONG / SOFAS



KELLY TWIN SEAT
Page 98



VISCONTI TWIN SEAT
Page 100



LUPINO TWIN SEAT
Page 102



MARTINE LOVE SEAT
Page 104



HAYWORTH TWIN SEAT
Page 106



JEANE SOFA
Page 110



SWANSON SOFA
Page 114



MARGRET SOFA
Page 118



DOROTHY SOFA
Page 122



DOROTHY SOFA
Page 126



DEBBIE SOFA
Page 126



VIVIEN SOFA
Page 126

ANDY stool

With a warm and friendly personality, Andy stool is an artistic combination of a polished brass structure and high-quality sheepskin upholstery. This gracious union is the perfect trendy addition to the coziest corner of the house.



Dia. 42 cm 16.5" **H.** 46 cm 18.1"

CENTURY COLLECTION



BETTY stool

Betty stool is made to be the matter of conversations and an ideal choice for lounge areas. Its splendid, architectonic legs are gilded in gold leaf and its upholstery is in high-quality velvet and finished with golden piping.



Dia. 35 cm 13.7" **H.** 42 cm 16.5"

CENTURY COLLECTION





COLETTE stool

Inspired by the iconic Moulin Rouge and sumptuous burlesque style, Colette stool is a reference to elegant beauty of Bohemian spirit. Draped in sensual fabrics, its exotic and mystic energy perfectly reflects the feminine personality and gracious silhouette. Upholstered in luscious cherry velvet with a copper plated brass ring around.



Dia. 42 cm 16.5" **H.** 48 cm 18.9"



A EXTREMELY DELICATE AND ELEGANT
MID-CENTURY FURNITURE PIECE

AUDREY stool

Layer upon layer of comfort is added with each cream velvet module on the Audrey stool. Golden piping articulates each of the segments and adds a glamorous highlight to Audrey.



Dia. 45 cm 17.7" **H.** 40 cm 15.7"

CENTURY COLLECTION

AUDREY bench

The memorable and intricate polished brass structure unites strength and the characteristic elegance of the golden age of Hollywood.



Dia. 120 cm 42.2" **H.** 45 cm 17.7"

CENTURY COLLECTION

CHARISSE stool

Cyd Charisse, an american actress and dancer, is known for the "strength and grace of a ballerina and an extraordinary on-screen presence that allowed her to play the cold and aloof femme fatale and the romantic ballerina with equal aplomb". Such powerful women inspired Ottiu to create this soft yet imposing mid century modern stool. Charisse modern stool features 6 layers in different tones of purple and pink, supported by a round base in polished brass.



Dia. 40 cm 15.7" **H.** 46 cm 18.1"

CENTURY COLLECTION





LOUIS stool

Louis stool is a mid century modern furniture piece, which seating is upholstered in a seductive cotton velvet mixed with the legs in walnut wood and some details in polished brass, turning this modern stool a must have classic design piece for any contemporary living space.



Dia. 40 cm 15.7" **H.** 46 cm 18.1"

WINFREY bench

The Winfrey bench has a solid and strong feminine touch. Featuring capitoné upholstery in genuine leather, this piece is embraced with a polished brass structure adding a special taste and synergy to any striking luxury interior project.



W. 122 cm 48" **D.** 51 cm 20" **H.** 45 cm 17.7"

CENTURY COLLECTION





LOUIS dining chair

With brown velvet and a contrasting golden piping, a classic design radiates from this chair's modern lines. The Louis dining chair rests on solid walnut legs with Ottiu's signature polished brass accents.



W. 52 cm 20.5" **D.** 57 cm 22.4" **H.** 84 cm 33.1"
SEAT H. 49 cm 19.3"

CENTURY COLLECTION



TIPPI dining chair

Our Tippi dining chair is not a discrete piece. Fresh, lively, breath-taking, it is the muse of the director. With a classic design but an audacious and bright genuine leather and finishing touches in brass to further pump its exuberance, it will give any space a fresh and lively feel.



W. 64 cm 25.8" **D.** 58 cm 22.8" **H.** 81 cm 31.8"
SEAT H. 50 cm 19.7"

CENTURY COLLECTION





LUNA dining chair

An unusual majestic elegance surrounds the Luna dining chair. The slender and curved solid walnut legs with signature brass accents join the surprising and memorable wing-shaped backrest. The extreme comfort of the chair, although absorbing, leaves center stage to the seductive feminine lines of Luna.



W. 59 cm 23.2" **D.** 52 cm 20.4" **H.** 80 cm 31.5"
SEAT H. 47 cm 18.5"

CENTURY COLLECTION

THE LUNA family



CENTURY COLLECTION



KELLY dining chair

Kelly dining chair dazzles in its smooth bordeaux velvet and long, elegant lacquered legs. The glossy black structure finished with a delicate touch of gold complements the polished brass nails adorning the contours of the gracious backrest.



W. 52 cm 20.4" **D.** 52 cm 20.4" **H.** 77 cm 30.3"
SEAT H. 48 cm 18.9"

CENTURY COLLECTION

THE KELLY family



CENTURY COLLECTION



ADDRESS dining chair

It happened one night is the inspiration movie for the Address dining chair's design. Shapely contoured in seductive and opulent form, Address dining chair is the quintessential starlet in any elegant space. Draped in hypnotic black velvet, polished brass and solid walnut.



W. 46 cm 18.1" **D.** 46 cm 18.1" **H.** 82 cm 32.2"
SEAT H. 49 cm 19.3"

CARON dining chair

Caron dining chair exhibits fascinating and romantic design. Drawing inspiration from Paris, the city of lovers, Caron will bring passion and desire to your spaces. This truly elegant piece is draped in sensual cotton velvet with brass accents and polished brass nails. It's difficult not to fall in love with these seductive and soft lines.



W. 52 cm 20.5" **D.** 60 cm 23.6" **H.** 81 cm 31.9"
SEAT H. 47 cm 18.5"

CENTURY COLLECTION

INGRID dining chair

A natural and unpretentious beauty marks our Ingrid dining chair as the actress who has inspired our designers, one of the most Oscar award-winning actresses - Ingrid Bergman. The involving backrest lined with soft 100% cotton velvet at the front and genuine leather at the back rests on lacquered legs with distinctive details in polished brass. As a film with Ingrid Bergman was a guarantee of superb quality, our Ingrid chair also ensures exceptional comfort and beauty to your dining room.



W. 53 cm 20.9" **D.** 56 cm 22" **H.** 78 cm 30.7"
SEAT H. 48 cm 18.9"

CENTURY COLLECTION



ANITA dining chair

On Anita dining chair the beauty and delicacy hide an extreme force just like one of the 50's female symbols – Anita Ekberg. The black lacquered structure with elegant brass accents, supports a delicate velvet seat in art déco forms that make Anita an unique piece to fit in refined and charming living rooms.



W. 60 cm 23.6" **D.** 58 cm 22.8" **H.** 81 cm 31.9"
SEAT H. 49 cm 19.3"

CENTURY COLLECTION





VISCONTI dining chair

Combining opposites, such as decadence and lavish beauty, is a gift possessed only by the great masters of cinema, like the namesake of this chair. The Visconti bar chair is given an unexpected and ethereal life by its ravishing grey shade on the top of its walnut feet and brass accents.



W. 55 cm 21.7" **D.** 58 cm 22.8" **H.** 74 cm 29.1"
SEAT H. 48 cm 18.9"

CENTURY COLLECTION



WINFREY dining chair

The Winfrey mid century modern dining chair is a reinterpretation of all the glamour and lushness lived during the Hollywood's golden era. This mid century modern furniture piece has a solid and strong feminine touch as it features a pastel blue cotton velvet, embraced with a gold plated brass structure. The Winfrey mid century modern dining chair adds a special taste and synergy to any striking luxury interior project.



W. 58 cm 22.8" **D.** 47.5 cm 18.7" **H.** 68 cm 26.8"
SEAT H. 46 cm 18.1"

CENTURY COLLECTION





LUPINO dining chair

Ida Lupino is unique in Hollywood's story. A strong women both in front of and behind the camera, working as directors, screenwriters and actresses, have been present since the earliest days of cinema. Lupino's strength blended with all her softness and elegance, inspired us to create this mid-century modern upholstery piece. The smooth cotton velvet of the contemporary dining chair will bring color and sophistication to any modern living space.



W. 68 cm 26.7" **D.** 60 cm 23.6" **H.** 86 cm 33.9"
SEAT H. 50 cm 19.7"

CENTURY COLLECTION



GARDNER dining chair

The style icon and Hollywood actress Ava Gardner was one of the most controversial stars of the golden era. Gardner looked simply stunning in her classic hair which was Ottiu's leading inspiration to create a beautiful, mid century modern dining chair. The pleats on the sit are recreating Ava Gardner's curly hair, combined with a sexy-chic silhouette dressed up in smooth velvet. The long walnut wood legs of Gardner mid century modern dining chair are finished with charming polished brass feet. The Garden dining chair is an exclusive upholstery piece which will bring glamour and sexyness to you living room décor.



W. 58 cm 22.8" **D.** 60 cm 23.6" **H.** 88 cm 34.6"
SEAT H. 51 cm 20.1"

CENTURY COLLECTION



BETH dining chair

Elizabeth Taylor had achieved her iconic status for the way she looked. With her violet eyes and porcelain skin, Taylor was considered one of the most sensual woman on earth. Such eathetreal beauty and glory was emphasized in one of the most acclaimed movies of the Hollywood's golden age, Cleopatra, where Taylor shows up the famous costume covered with golden feathers. Inspired by the iconic costume, Ottiu designed the new Beth mid-century modern dining chair. The exquisite modern dining chair features a structure in polished brass supporting the smooth velvet upholstery on the top and back of the piece. The arms of the mid-century modern dining chair recalls the glorious golden feathers upon Elizabeth Taylor's arms. The Beth dining chair is a memorable mid-century modern design piece created to perfectly fit in any contemporary home décor.



W. 61.5 cm 24.2" **D.** 56 cm 22" **H.** 74 cm 29.1"
SEAT H. 46 cm 18.1"

KATHARINA dining chair

Known for her fierce independence and spirited personality, Katharine Hepburn was the leading star of Hollywood during 60 years. In addition to being brilliant on the screen, she was also a woman who defied standards and scandalized Hollywood in the 1930s. In honor of the great Hollywood star with more oscars in the world, Katharina dining chair was designed. Perfect for any dining room with a mid-century modern decor, the Katharina dining chair has lean solid brass legs in polished brass supporting a high-quality cotton velvet. On the back a beautiful polished brass handle that signifies her strength and vigorousness.



W. 64 cm 25.2" **D.** 52 cm 20.5" **H.** 71 cm 27.9"
SEAT H. 45 cm 17.7"



KIM dining chair

Kim dining chair mid-century contemporary is a must have symbol of grace and style. Combined with Kim mid-century modern dining chair's curvaceous yet decisive lines, a pinewood structure and walnut wood legs with high gloss varnish we cannot help but to be immediately transported to the mesmerizing pictures of the great legends of Noir films. Bring some glamour to your contemporary living space or interior design project with this new addiction. Kim dining chair is part of Century Collection.



W. 59.5 cm 23.4" **D.** 54 cm 21.2" **H.** 77 cm 30.3"
SEAT H. 49 cm 19.3"

JOAN dining chair

Joan Crawford was an American film and television actress who began her career as a dancer and stage showgirl. In 1999, the AFI ranked Crawford tenth on its list of the greatest female stars of Classic Hollywood Cinema. Inspired in this classical and magical talent, Ottiu designed a luxury and mid century modern dining chair that embodies the golden era cinema culture.



W. 65 cm 25.6" **D.** 62 cm 24.4" **H.** 78 cm 30.7"
SEAT H. 48 cm 18.9"





RUBY dining chair

Ruby Dee is best known for her role "Ruth Younger" at "A Raisin in the Sun", but she was not only an actress, she was also a poet, screenwriter, journalist and civil rights activist. Ottiu has decided to honor her brilliant career and designed this vintage dining chair. The Ruby Dining Chair is a mid-century dining chair that has a beechwood structure and lacquered legs with high gloss varnish. To give it a special touch it has polished brass nails and feet, and a fabulous velvet upholstery.



W. 51 cm 20.1" **D.** 50 cm 19.7" **H.** 81 cm 31.9"
SEAT H. 47 cm 18.5"

KELLY bar chair

Kelly bar chair dazzles in its smooth mustard velvet and long, elegant legs. The glossy black structure, finished with a delicate touch of gold, complements the polished brass nails that adorn the contours of the graceful backrest.



W. 52 cm 20.4" **D.** 52 cm 20.4" **H.** 109 cm 42.9"
SEAT H. 81 cm 31.9"

CENTURY COLLECTION





LUNA bar chair

An unusual majestic elegance surrounds the Luna bar chair. The slender and curved solid walnut legs with signature brass accents join the surprising and memorable wing-shaped backrest. The extreme comfort of the chair, although absorbing, leaves center stage to the seductive feminine lines of Luna.



W. 57 cm 22.4" **D.** 50 cm 19.6" **H.** 113 cm 44.4"
SEAT H. 81 cm 31.9"

CENTURY COLLECTION



LOUIS bar chair

With a gentle velvet and a contrasting golden cord, a classic design radiates from Louis bar chair's modern lines. The Louis bar chair rests on solid walnut legs with Ottiu's signature brass accents.



W. 52 cm 20.5" **D.** 57 cm 22.4" **H.** 111.5 cm 43.9"
SEAT H. 74.5 cm 29.3"

CENTURY COLLECTION





TIPPI bar chair

Our Tippi bar chair is not a discrete piece. Fresh, lively, breath-taking, it is the muse of the director. With a classic design but an audacious and bright cotton velvet and finishing touches in brass to further pump its exuberance, it will give any space a fresh and lively feel.



W. 58 cm 22.8" **D.** 60 cm 23.6" **H.** 106 cm 41.7"
SEAT H. 78 cm 30.7"

CENTURY COLLECTION

WINFREY bar chair

The Winfrey bar chair has a solid and strong feminine touch. Featuring upholstery in genuine leather, this piece is embraced with a aged brushed brass structure adding a special taste and synergy to any striking luxury interior project.



W. 58 cm 22.8" **D.** 47.5 cm 18.7" **H.** 91.5 cm 36"
SEAT H. 75 cm 29.5"

CENTURY COLLECTION





VISCONTI bar chair

Combining opposites, such as decadence and lavish beauty, is a gift possessed only by the great masters of cinema, like the namesake of this chair. The Visconti bar chair is given an unexpected and ethereal life by its ravishing grey shade on the top of its walnut feet and brass accents.



W. 55 cm 21.7" **D.** 57 cm 22.4" **H.** 106 cm 41.7"
SEAT H. 76 cm 29.9"

CARON bar chair

Inspired by Paris, the fascinating capital of lovers, Caron is a mid century modern bar chair which exhibits fascinating and romantic design. Your contemporary living spaces will become passion nests where seduction and love are living an intense affair. Caron is an absolutely elegant mid century modern furniture piece, draped in sensual dark grey cotton velvet in the front, contrasting with light grey of the back rest.



W. 52 cm 20.5" **D.** 60 cm 23.6" **H.** 77.5 cm 30.5"
SEAT H. 108 cm 42.5"

CENTURY COLLECTION



KIM bar chair

Kim Novak was the Hollywood golden era's breathtaking face, large-boned perfect blonde star. The controversy around her image and inexperience as an actress, turned her a 50s and 60s super star. The particular curves of Kim mid century modern bar chair, dressed with lushness green velvet, is a must have contemporary upholstery piece, symbol of grace and style.



W. 52 cm 20.5" D. 52 cm 20.5" H. 112 cm 44.1"
SEAT H. 82 cm 32.2"

CENTURY COLLECTION



LOUIS twin bar chair

Louis Armstrong was an American jazz trumpeter and singer, recalled as one of the most imposing figures of jazz music, having featured some Hollywood cinema classics during the golden era. This lofty persona of the golden age inspired OTTIU designers to create a stately family of mid-century modern furniture pieces called Louis. Louis mid-century modern twin bar chair is upholstered in a seductive neutral grey cotton velvet, contrasting with the legs in solid walnut wood with modern lines and polished brass details. Louis twin bar chair is the perfect selection for any contemporary hospitality project. Louis Twin Bar Chair was designed by Ottiu and is part of the Century Collection.



W. 120 cm 47.2" **D.** 57 cm 22.4" **H.** 105 cm 41.3"
SEAT H. 80 cm 31.5"

LUPINO bar chair

From the Lupino Family was born this classic bar chair, inspired by one of the most independent women of the golden Hollywood era. With Ida Lupino's beauty and quotes in mind, the Ottiu designers created this mid-century modern bar chair to honour her. With its solid walnut wood legs finished with high gloss varnish, luxurious cotton velvet upholstery and polished brass accents, the Lupino mid-century modern bar chair is the perfect addition to living spaces for those that appreciate sophisticated and luxury décor. The luxurious Lupino bar chair breathes glamour and it is a must-have piece for your home décor or even your hospitality projects. The Lupino Bar Chair is part of the Century Collection by Ottiu.



W. 68 cm 26.8" **D.** 60 cm 23.6" **H.** 110 cm 43.3"
SEAT H. 78 cm 30.7"

CENTURY COLLECTION



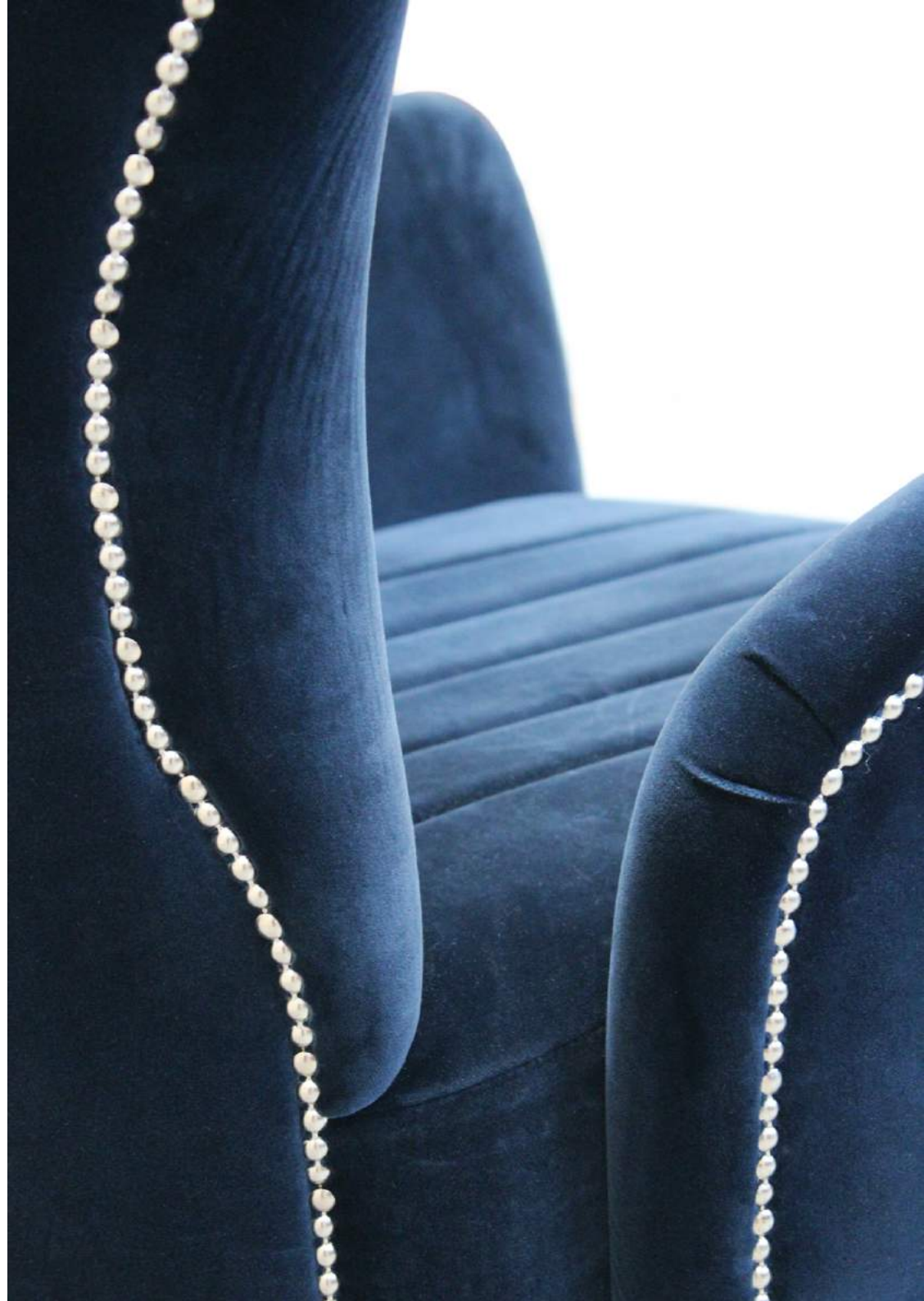
LOREN armchair

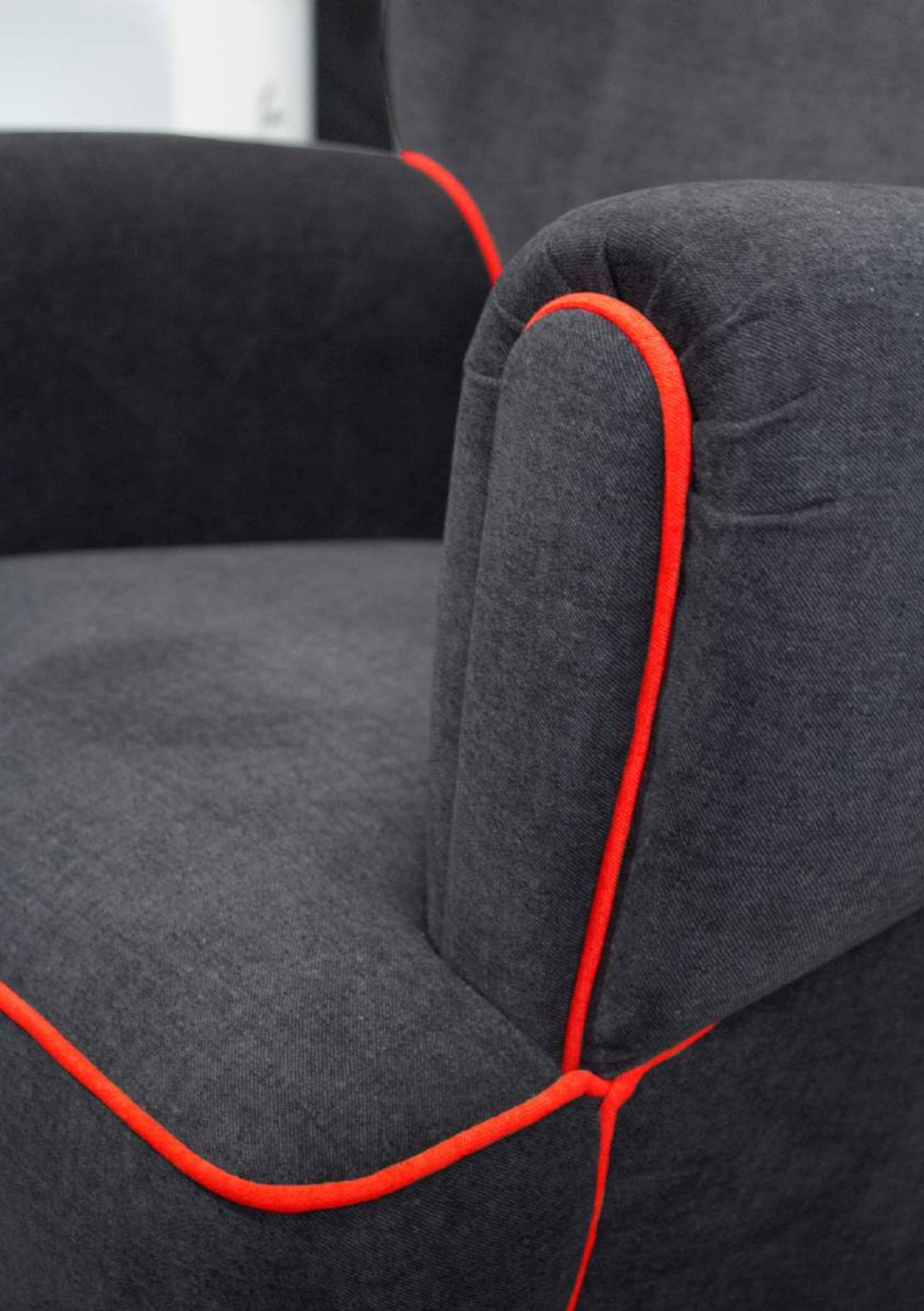
We revisit the timeless classic Loren armchair, a piece composed with subtle lines as well as a strong character. Its nicked nails contrast with a high quality Byzantium velvet, and its tubular feet are finished with luxurious silver leaf.



W. 77 cm 30.3" **D.** 80 cm 31.4" **H.** 103 cm 40.5"
SEAT H. 43 cm 16.9"

CENTURY COLLECTION





GARLAND armchair

The dainty Garland armchair is wrapped in a soft honeysuckle velvet and a radiant golden cord. Finished with gold leaf, the cylindrical feet add an elegant touch to this contemporary piece.



W. 73 cm 28.7" **D.** 57 cm 22.4" **H.** 94 cm 37"
SEAT H. 43 cm 16.9"

ELLEN armchair

The ebony wood feet and luxurious upholstery pairing make the Ellen armchair a delicate and light piece. Designed for vintage and classical interiors, this piece fits perfectly a welcoming discrete environment.



W. 69 cm 27.3" **D.** 83 cm 32.6" **H.** 74 cm 29.1"
SEAT H. 45 cm 17.7"

CENTURY COLLECTION



KIM armchair

The Kim armchair has us spellbound by the lushness of its green velvet and walnut wood structure. Combined with its curvaceous yet decisive lines, we cannot help but to be immediately transported to the mesmerizing pictures of the great masters of film noir.



W. 79.5 cm 31.3" **D.** 82 cm 32.3" **H.** 80 cm 31.5"
SEAT H. 46 cm 18.1"

CENTURY COLLECTION



VISCONTI armchair

Combining opposites, such as decadence and lavish beauty, is a gift possessed only by the great masters of cinema, like the namesake of this chair. The Visconti armchair is given an unexpected and ethereal life by its ravishing shade of chocolate on the top of its walnut feet and brass accents.



W. 68 cm 26.7" **D.** 76 cm 29.9" **H.** 86 cm 33.8"
SEAT H. 45 cm 17.7"

GODARD armchair

In cinema, as in life, history is not made by those who never took any chances. The French Nouvelle Vague changed the status quo with its daring visuals and unorthodox storytelling. Inspired by such an iconic imagery, Ottiu brings you the eye-catching Godard armchair in metallic grey velvet over copper plated feet.



W. 70 cm 27.5" **D.** 57 cm 22.4" **H.** 94 cm 37"
SEAT H. 45 cm 17.7"

CENTURY COLLECTION



TIPPI armchair

Our Tippi armchair is not a discrete piece. Fresh, lively, breath-taking, it is the muse of the director. With a classic design but an audacious and bright cotton velvet and finishing touches in brass to further pump its exuberance, it will give any space a fresh and lively feel.



W. 76 cm 29.9" **D.** 83 cm 32.7" **H.** 76.5 cm 30.1"
SEAT H. 45 cm 17.7"

CENTURY COLLECTION



LOUIS armchair

With burgundy velvet and a contrasting golden piping, a classic design radiates from this chair's modern lines. The Louis Armchair rests on solid walnut legs with Ottiu's signature brass accents.



W. 72 cm 28.3" **D.** 70 cm 27.5" **H.** 90 cm 35.5"
SEAT H. 45 cm 17.7"

CENTURY COLLECTION



SCARLET armchair

Scarlet armchair is a perfect reflection of pure and greatest elegance. Drawing inspiration from gorgeous feather fans for burlesque, its eclectic and truly original back will give your spaces an entirely new character. Scarlet is draped in voluptuous brick coloured cotton velvet and glamorized with polished brass nails. Create your own moment of tension and excitement with this charming yet seductive armchair.



W. 66 cm 26" **D.** 72 cm 28.3" **H.** 88 cm 34.6"
SEAT H. 43 cm 16.9"

CENTURY COLLECTION





LUPINO armchair

Ida Lupino is unique in Hollywood's story. A strong women both in front of and behind the camera, working as directors, screenwriters and actresses, have been present since the earliest days of cinema. Lupino's strength blended with all her softness and elegance, inspired us to create this mid- century modern upholstery piece. The smooth cotton velvet of the contemporary armchair will bring color and sophistication to any modern living space.



W. 85 cm 33.4" **D.** 75 cm 29.5" **H.** 87 cm 34.2"
SEAT H. 46 cm 18.1"



MARILYN armchair

Marilyn Monroe was one of the most popular sex symbols of the 1950s due to her beautiful blue eyes and perfectly-shaped lips. After all this years Marilyn continues to be considered a major popular culture icon and a reference in fashion and beauty. Marilyn armchair is an ode to the "bombshell", inspired not only by her beauty but also her curves and silhouette. The smooth velvet of the structure represents one of Monroe's most iconic outfits as well as her big blue eyes, detailed with polished brass nails, recalling Monroe's blondness – the turning point of her career.



W. 68 cm 26.8" **D.** 68 cm 26.8" **H.** 76 cm 29.9"
SEAT H. 45 cm 17.7"

CENTURY COLLECTION



GRETA armchair

She was voted by the American Film Institute as the fifth greatest legend in the history of the seventh art. Greta Garbo was mysterious and lonely, giving only fourteen interviews throughout her life but always representing the magic and strength of her talent. Greta mid century armchair embodies a myth from the cinema culture and tells a story while you leave yourself to its comfort. Upholstered in draped velvet along its body, supported with long polished brass legs and finished with extremely elegant brass accents, this art Deco armchair would fit any living set by its charming beauty and figure. Greta Armchair was designed by Ottiu and is part of the Century Collection.



W. 92 cm 36.2" **D.** 79 cm 31.1" **H.** 88 cm 36.4"
SEAT H. 45 cm 17.7"



DEBBIE armchair

Debbie Reynolds has always been recognized for her great strength and perseverance. Inspired by the 50's and 60's retro designs, Debbie armchair combines the best of the modern flair with the contemporary lifestyle. Ottiu has designed a mid-century modern armchair with a unique design supported by a polished brass base, along with a cotton velvet upholstery. This art deco inspired armchair brings a warm and cosy feeling to a living room set. Debbie Armchair was designed by Ottiu and is part of the Century Collection.



W. 100 cm 39.4" **D.** 90 cm 35.4" **H.** 80 cm 31.5"
SEAT H. 42 cm 16.5"

KELLY twin seat

Kelly twin seat dazzles in its smooth bordeaux velvet and long, elegant legs. The glossy black structure finished with a delicate touch of gold complements the polished brass nails adorning the contours of the gracious backrest.



W. 138 cm 54.3" **D.** 52 cm 20.5" **H.** 76.5 cm 30.1"
SEAT H. 46 cm 18.1"

CENTURY COLLECTION





VISCONTI twin seat

Combining opposites, such as decadence and lavish beauty, a gift possessed only by the great masters of cinema, like the namesake of this chair. The Visconti twin seat is given an unexpected and ethereal life by its ravishing deep plum shade on the top of its walnut wood legs with polished brass accents.



W. 154.5 cm 60.8" **D.** 77.5 cm 30.5" **H.** 86 cm 33.9"
SEAT H. 47.5 cm 18.7"



LUPINO twin seat

Ida Lupino is unique in Hollywood's story. A strong women both in front of and behind the camera, working as directors, screenwriters and actresses, have been present since the earliest days of cinema. Lupino's strength blended with all her softness and elegance, inspired us to create this mid-century modern upholstery piece. The yellow, smooth cotton velvet of the contemporary sofa will bring color and sophistication to any modern living space.



W. 148 cm 58.3" **D.** 75 cm 29.5" **H.** 87 cm 34.2"
SEAT H. 46 cm 18.1"

MARTINE sofa

Gracefully shaped in red satin over brass feet, our Martine Love Seat emerges as Ottiu's Bond girl, capable of tempting even the most well-trained and demanding observers.



W. 150 cm 59" **D.** 64 cm 25.1" **H.** 90 cm 35.5"
SEAT H. 45 cm 17.7"

CENTURY COLLECTION





HAYWORTH sofa

A feminine color, the mystique of the geometric shapes and the gracious touch of the gold plated feet characterize our dazzling Hayworth twin seat. Hayworth is once again inspired by the golden era of film noir and it is just as puzzling and captivating as the star that gives her name. The lavender velvet and legs in polished brass confer the final dramatic touches to this grand and imposing piece.



W. 150 cm 59" **D.** 75 cm 29.5" **H.** 73 cm 28.7"
SEAT H. 46 cm 18.1"



JEANE sofa

Sexy and opulent, Jeane sofa presents its ardent essence with enchanting design lines made with top quality velvet. Its ravishing top rests on polished brass feet, making this sofa a truly unique and grandiose piece.



W. 252 cm 99.2" **D.** 86 cm 33.6" **H.** 83 cm 32.6"
SEAT H. 45 cm 17.7"





SWANSON sofa

Imagined for the classic film sets, the Swanson sofa exudes rich and exotic contours, ideal for creating a feminine and luxurious ambiance. A piece that harmoniously joins the best of two design eras, the solid walnut feet are a feature inspired in the mid-century period, while the shapely upholstery, in cotton velvet marsala, is reminiscent of the great days of art deco.



W. 234 cm 92.1" **D.** 92 cm 36.2" **H.** 80 cm 31.5"
SEAT H. 45 cm 17.7"



MARGRET sofa

The Margret sofa was inspired by the strong, rich colors and voluptuous shapes that emerged during the 1950s. Featuring a show-stopping petrol velvet over polished brass feet, this sofa is guaranteed to bring old Hollywood glamour and grandeur to your living room.



W. 342 cm 134.6" **D.** 140 cm 55.1" **H.** 86.5 cm 34.1"
SEAT H. 43 cm 16.9"

DOROTHY sofa

The Dorothy sofa marks its presence with a graceful silhouette of well-detailed features. A variation of the original Jeane, Dorothy is lavishing in its sensuality but charismatic in personality. A touch of velvet is added to its feminine contours and luxurious finishings. A profound and luscious piece with a gentle nature, the Dorothy sofa is a sensible addition to your fabulous interiors.



W. 252 cm 99.2" **D.** 86 cm 33.6" **H.** 75 cm 29.5"
SEAT H. 45 cm 17.7"



CAROLE sofa

"Nothing on earth can give a woman confidence and that grand inner happiness like a little exterior decoration!", Carole Lombard said once. The highest-paid star in Hollywood in the late 1930s has her own beauty secrets: cleanliness, charm, cosmetics, color harmony and avoiding extremes! Inspired by Carole's secrets, Ottiu designed a mid-century modern sofa, which clean structure is made in pinewood, upholstered in cotton velvet and detailed with gold piping. Carole sofa features charming legs in walnut wood and polished brass feet, becoming a must have mid century modern upholstery piece to any home décor.



W. 200 cm 78.7" **D.** 87 cm 34.2" **H.** 85 cm 33.4"
SEAT H. 45 cm 17.7"





DEBBIE sofa

Debbie Reynolds was a 50's Hollywood star legend known for her glamour, versatility and humanitarian work. Debbie Reynolds has always been recognized for her great strength and perseverance. Inspired by the 50's and 60's retro designs, Debbie sofa combines the best of the modern flair with the contemporary lifestyle. Ottiu has designed a mid-century modern sof  with a unique design supported by a polished brass base, along with a cotton velvet upholstery. This art deco inspired sofa brings a warm and cosy feeling to a living room set. Debbie Sofa was designed by Ottiu and is part of the Century Collection.



W. 240 cm 94.5" **D.** 90 cm 35.4" **H.** 80 cm 31.5"
SEAT H. 42 cm 16.5"



VIVIEN sofa

Vivien Leigh was a British stage and film actress. Also known as Lady Olivier, she won two Academy Awards for Best Actress for her performances as Scarlett O'Hara in *Gone with the Wind* and Blanche DuBois in the film version of *A Streetcar Named Desire*. Inspired by Vivien's achievements, Ottiu has designed an extremely comfortable mid-century modern sofa with a rectangular base produced entirely in polished brass and features a flair arm style, upholstered in cotton velvet that allows decor melange. The Vivien Sofa is a must-have mid-century modern upholstery piece to any living room. Vivien Sofa was designed by Ottiu and is part of the Century Collection.



W. 245 cm 96.5" **D.** 88 cm 34.6" **H.** 75 cm 29.5"
SEAT H. 40 cm 15.7"

