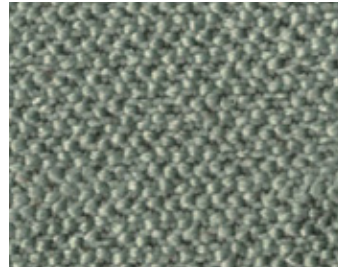
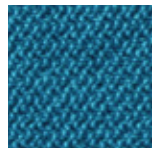


ARIZONA

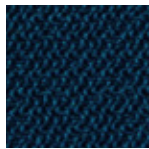
Fabric Band 1



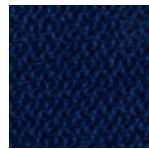
18078



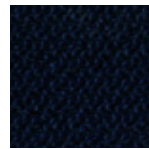
16007



16031



16080



16098



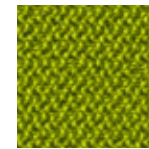
18033



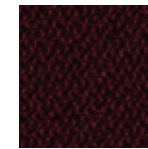
17013



18003



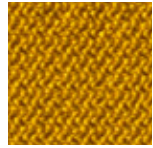
17011



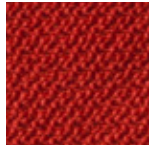
15004



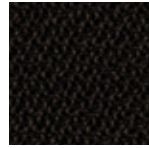
14027



13005



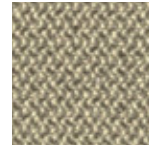
14004



12036



12005



11006

CASALA FABRICS

CASALA FABRICS

Technical specifications

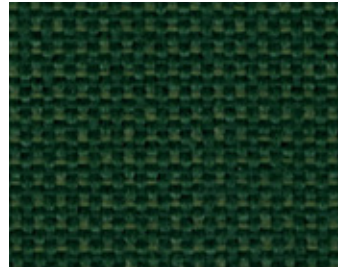
MATERIAL	100% polyester
WEIGHT WIDTH	approx. 320 g/m ² approx. 140 cm
ABRASION RESISTANCE	ISO 12947/2 / 100.000 martindale
FLAME RETARDENCY	C1 / M1 / CRIB 5 / EN 1021/1-2 IMO Res. A 652 (16) Part 8 IMO Res. A 471 (XII) Part 7 BS 7176 Medium Hazard NF D 60013 Class AM 18
FASTNESS TO LIGHT	(ISO) 5-8
FASTNESS TO RUBBING & PILLING	(ISO) 4-5

The colours in this publication may differ to the original product. We recommend requesting a product sample.
Sample service and further information: WWW.CASALA.COM/SAMPLES

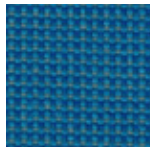


ALASKA

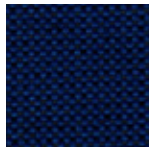
Fabric Band 2



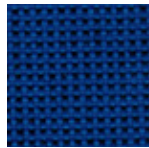
27936



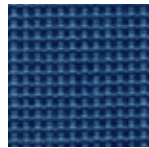
26507



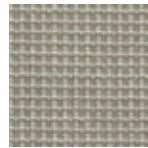
26580



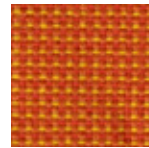
26572



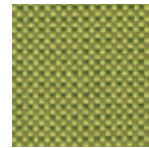
26516



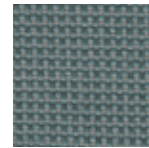
21930



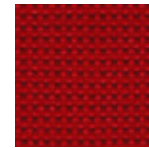
24930



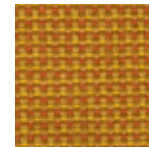
29704



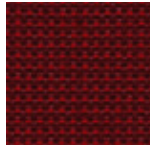
28514



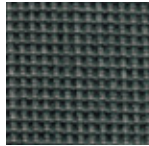
24528



23920



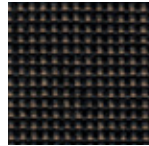
24517



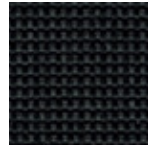
28507



28534



28511



28510

CASALA FABRICS

CASALA FABRICS

Technical specifications

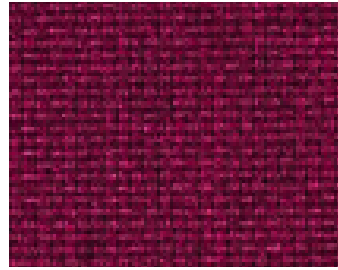
MATERIAL	100% Trevira CS®
WEIGHT WIDTH	approx. 260 g/m2 approx. 140 cm
ABRASION RESISTANCE	UNI EN ISO 12947/2 70.000 martindale
FLAME RETARDENCY	C1 / B1 / M1 / CRIB 5 / EN 1021/1-2 IMO Res. A 652 (16) Part 8 IMO Res. A 471 (XII) Part 7 BS 7176 Medium Hazard NF D 60013 Class AM 18
FASTNESS TO LIGHT	(ISO) 5-8
FASTNESS TO RUBBING & PILLING	(ISO) 4-5

The colours in this publication may differ to the original product. We recommend requesting a product sample.
Sample service and further information: WWW.CASALA.COM/SAMPLES

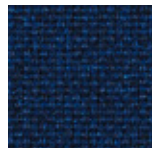


DAKOTA

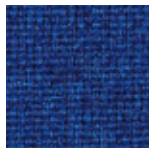
Fabric Band 3



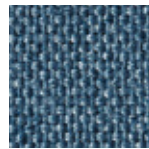
35014



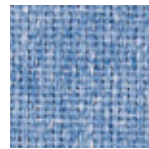
36034



36013



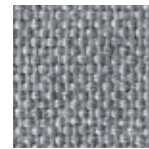
36091



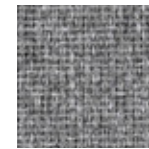
36001



31025



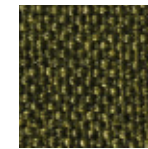
38032



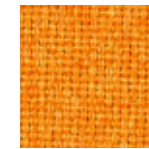
38006



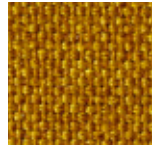
38011



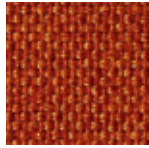
37022



33094



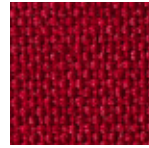
33005



33082



34029



34021



37019

CASALA FABRICS

CASALA FABRICS

Technical specifications

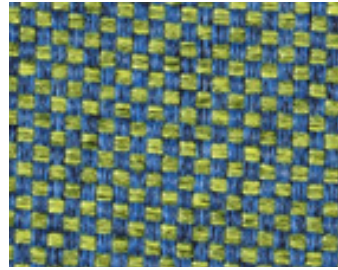
MATERIAL	100% Trevira CS®
WEIGHT WIDTH	approx. 280 g/m2 approx. 140 cm
ABRASION RESISTANCE	UNI EN ISO 12947/2 80.000 martindale
FLAME RETARDENCY	C1 / B1 / M1 / CRIB 5 / EN 1021/1-2 IMO Res. A 652 (16) Part 8 BS 7176 Medium Hazard NF D 60013 Class AM 18
FASTNESS TO LIGHT	(ISO) 5-8
FASTNESS TO RUBBING & PILLING	(ISO) 4-5

The colours in this publication may differ to the original product. We recommend requesting a product sample.
Sample service and further information: WWW.CASALA.COM/SAMPLES



GEORGIA

Fabric Band 4



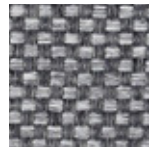
49603



49804



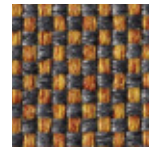
49805



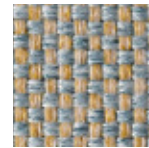
49820



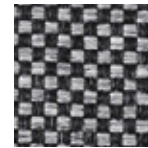
49109



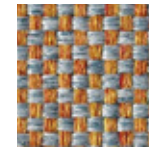
49316



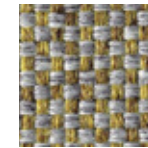
49106



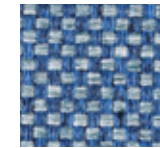
49803



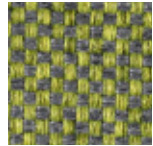
49309



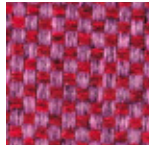
49704



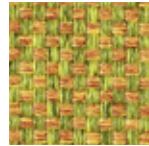
49605



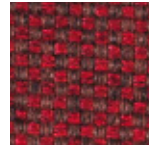
49705



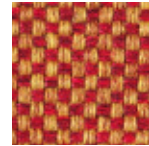
49501



49702



49401



49404

CASALA FABRICS

CASALA FABRICS


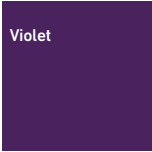

Technical specifications

MATERIAL	100 % Trevira CS®
WEIGHT WIDTH	approx. 400 g/m2 approx. 150 cm
ABRASION RESISTANCE	UNI EN ISO 12947/2 75.000 martindale
FLAME RETARDENCY	C1 / B1 / M1 / CRIB 5 / EN 1021/1-2 IMO Res. A 652 (16) Part 8 IMO Res. A 471 (XII) Part 7 BS 7176 Medium Hazard NF D 60013 Class AM 18
FASTNESS TO LIGHT	(ISO) 5-8
FASTNESS TO RUBBING & PILLING	(ISO) 4-5

The colours in this publication may differ to the original product. We recommend requesting a product sample.
Sample service and further information: WWW.CASALA.COM/SAMPLES



recommended plastic colours Carver / Cello / Cobra / Curvy

 Orange	Alaska 24930 Georgia 49309 Georgia 49702	 Grey	Alaska 28507 Georgia 49820	 Graphite	Alaska 28510 Dakota 38011 Georgia 49804	 Azur blue	Arizona 16007 Alaska 26507	 Petrol	Dakota 36034	 Violet	Arizona 15004
 Brick	Dakota 33082 Georgia 49404	 Sand	Alaska 21930 Dakota 31025	 Black	Arizona 18033 Alaska 28510 Alaska 28534 Georgia 49803 Georgia 49804						

recommended plastic colours lynx / onyx

 Light Grey	Dakota 38006 Georgia 49109	 Grey	Alaska 28507 Arizona 18003 Dakota 38011 Georgia 49704 Georgia 49705 Georgia 49820	 Black	Alaska 28511 Alaska 28534 Arizona 8033 Georgia 49805	 Dark blue	Alaska 26516 Arizona 16098 Dakota 36091 Georgia 49603 Georgia 49605	 Fuchsia	Dakota 34029 Georgia 49501	 White	Dakota 31025 Georgia 49109
 Beige	Alaska 21930 Dakota 31025 Georgia 49704	 Soft Petrol	Dakota 38032 Georgia 49106								

The colours in this publication may differ to the original product. We recommend requesting a product sample.
Sample service and further information: WWW.CASALA.COM/SAMPLES