



DESIGN
Stockholm
HOUSE

The Publishing House for
Scandinavian Design.



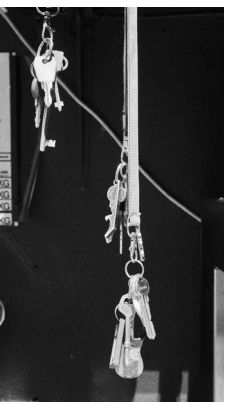
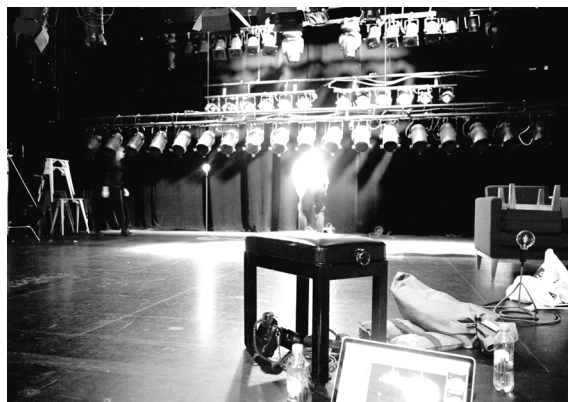
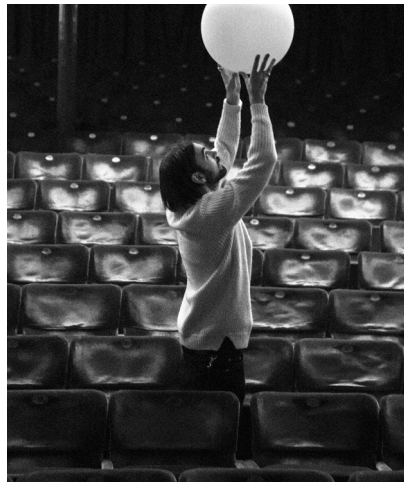
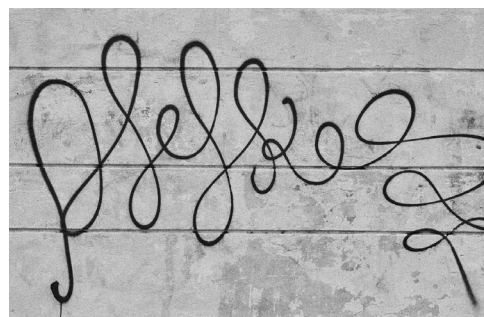
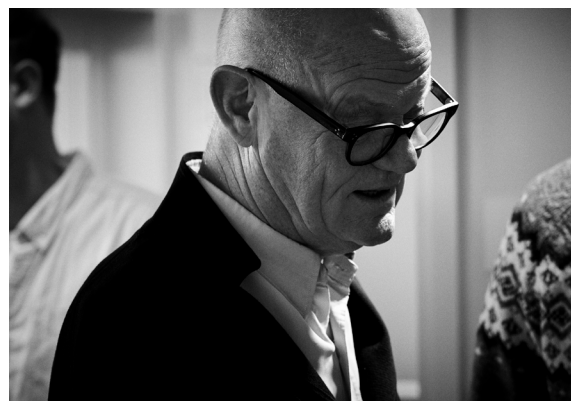
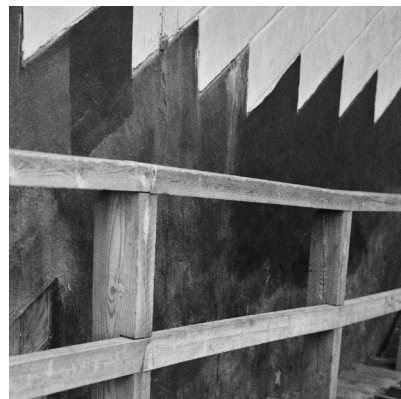
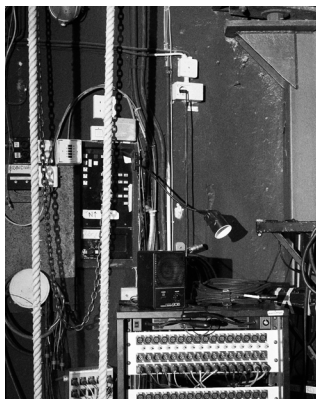
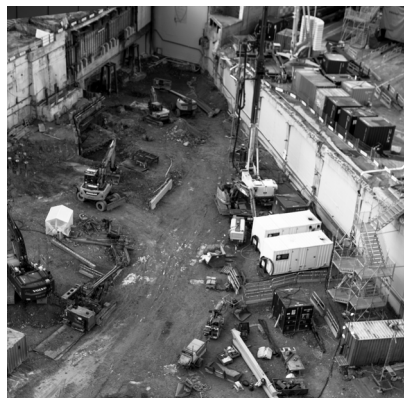
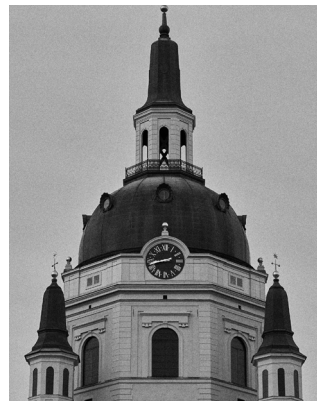
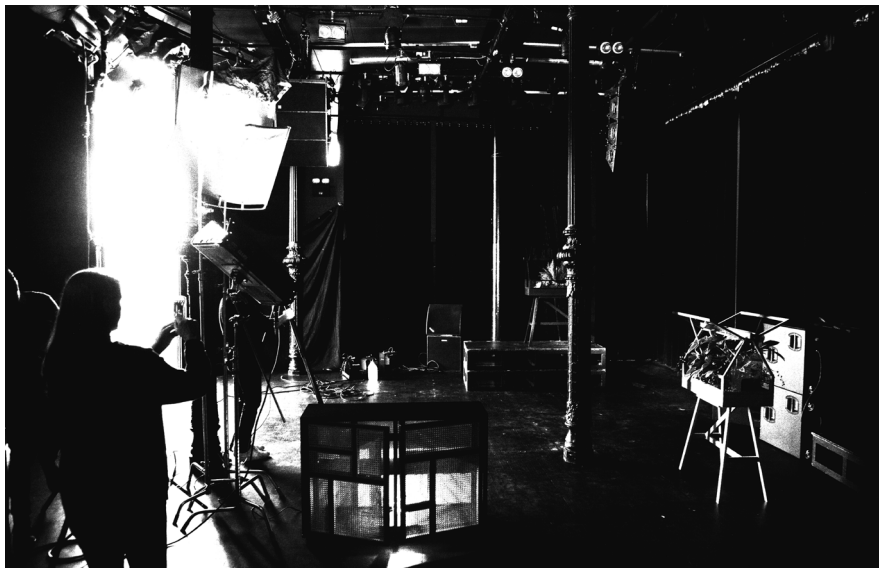
← Our office is just around the corner from the famous restaurant Gondolen. If you happen to be in the neighbourhood be sure to pay them a visit.

Creative magnetism is the basis of our identity. Encounters and conversations with designers and makers are the pillars of our operation. Knowledge, experiences and perspectives from different areas coalesce, and in the best cases, the ideas evolve into something new and exciting. Creative magnetism is about ingenuity and attractiveness.

Design House Stockholm celebrated 25 years last year. In conjunction with the anniversary, we're looking back at a quarter century of the craft of designers and how we have changed through the years as a creative hub. It's a timely moment for contemplation and reflection, without becoming caught up in nostalgia. Instead, we engage in these conversations when we see one another.

We conclude that everything around us has changed, both inside and out, micro and macro: our organization, our surroundings.

Our publishing house has gotten younger. New abilities can now be found behind the scenes. They have got their mark on this year's catalogue and are largely responsible for the new feel, smell on the pages you hold in your hand. Our office is in the heart of what is currently Stockholm's largest restructuring project, and we are watching first-hand as Slussen is torn down and deconstructed with each passing day.



← This is Södra Teatern. Established in 1869 it's the oldest private theatre in Stockholm. Despite being a theatre the emphasis is on live music and club nights. On warm and sunny days you can enjoy a drink on their terrace which offers a spectacular view over Stockholm.



In the midst of this centrepiece, we have found a stage for our pieces. Just a stone's throw away, across the bridge that no Stockholmer can miss, is Södra Teatern. As is occasionally true of such decisions, chance played a role in the selection of this elegant building. The idea of Söder's hills and the proximity to us was part of the discussion, and at a lunch, we tested our idea on-site. After that it was underway. Photographer Brendan Austin came to us via Alexander Lervik, who gave life to our brightest new addition. His dark and often mystical imagery spoke to us, and suddenly we saw Södra Teatern's motley interior through new eyes.

Synnöve Mork have designed the sets. Many years of experience have given her a studied intuition. For this catalogue, she was given free rein to interpret the year's new arrivals and the results are both playful and dramatic.

This year's designers are a strong group, to say the least. We feature names such as Alexander Lervik, Lisa Hilland, Eva Schildt, Jessika Källeskog, Lina Nordqvist, Lena Bergström and Atelier 2+.

We have arranged their works on the stage of Södra Teatern, not because they belong in the limelight, but so that you can examine them in detail. We want to show you that our products can withstand an inspection of every seam. We occasionally hear that it is difficult for designers to get their work into our collection, which is related to our high demands and criteria regarding ideas, form and function. Most of our products are simple and what makes them special is their actual use. Our furniture is intended to be used in your home and public environment, every day. That is why we never compromise on quality, whether it comes to production or materials. It must be sustainable. The entire way.

In 2018, we feel that our collection of furniture has risen to a higher level and that is why we now are taking a huge step into the furniture world. The design has been there since the beginning and Stockholm is the city in which we work. Design House Stockholm is now starting to become a complete house for furniture. I want to thank you for your time spent on reading this and leave it to you to imagine your space through our eyes.

— Anders Färdig, CEO.



*Together with our news
for 2018 we have also included
some of our classics.*



Lisa Hilland's *Torso* is the chair, which like a bare torso, can be dressed. For 2018 she has expanded the collection with a bar stool and a lounge chair. The woven leather back is inspired by the traditional hunter chair and gently flirts with Swedish craft traditions. The chairs are modest in their expression yet they are visually striking with their woven leather detailing. Lisa Hilland puts a lot of value to the fact that *Torso* is produced in Sweden as she prefers to be working close to the manufacturer. She can often be seen on the factory floor searching for eco-friendly solutions to enhance the project. The new additions are dressed for the party and you'll find them in sophisticated bars and salons. You might say that *Torso* family are the lobster and champagne of chairs.

Torso

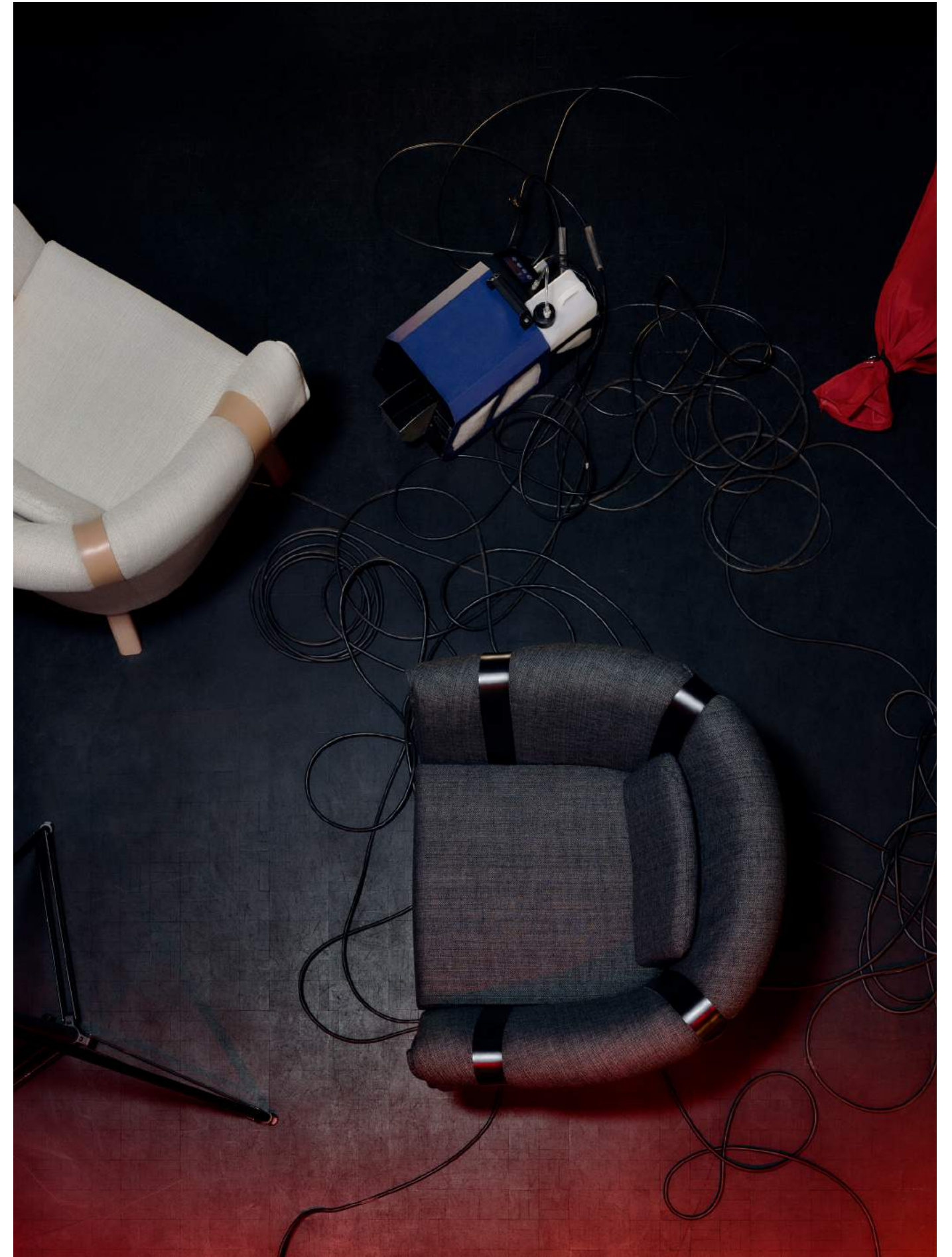
by Lisa Hilland







Torso bar stool (p.95)



Ram easy chair (p.100)



The idea that became *Ram* was born when Fredrik Färg and Emma Blanche took on a train trip to Italy. They sat and contemplated over a small detail on a nylon backpack, namely the leather straps with a buckle that held up the rolled-up fabric on the top of the backpack. “How can one transfer this idea to an upholstered chair?”, they thought. In their studio, they sewed and measured and experimented with the idea and gradually the *Ram* armchair took form. Their ambition was to make a highly comfortable club chair and we who’ve had the luxury of relaxing in it for a year can assure you that they have succeeded.

Ram

*by Fredrik Färg &
Emma Blanche*

*A sculpture on the wall,
but useful.*

Step stepladder
by Karl Malmvall (p.101)



With *Family Chairs*, Lina Nordqvist explored the traditional Swedish stick back chair in a modern context. Compared to other chairs they are narrow enough, but not too narrow, for the whole family to gather around the dining table. For 2018 the family have been upgraded with seat cushions. Lina did not want to alter the design of the chairs to ensure your comfort so the cushions are optional and can be fastened on the underside with push buttons.

Family Chairs

by Lina Nordqvist





Family Chair seat cushion (p.96)



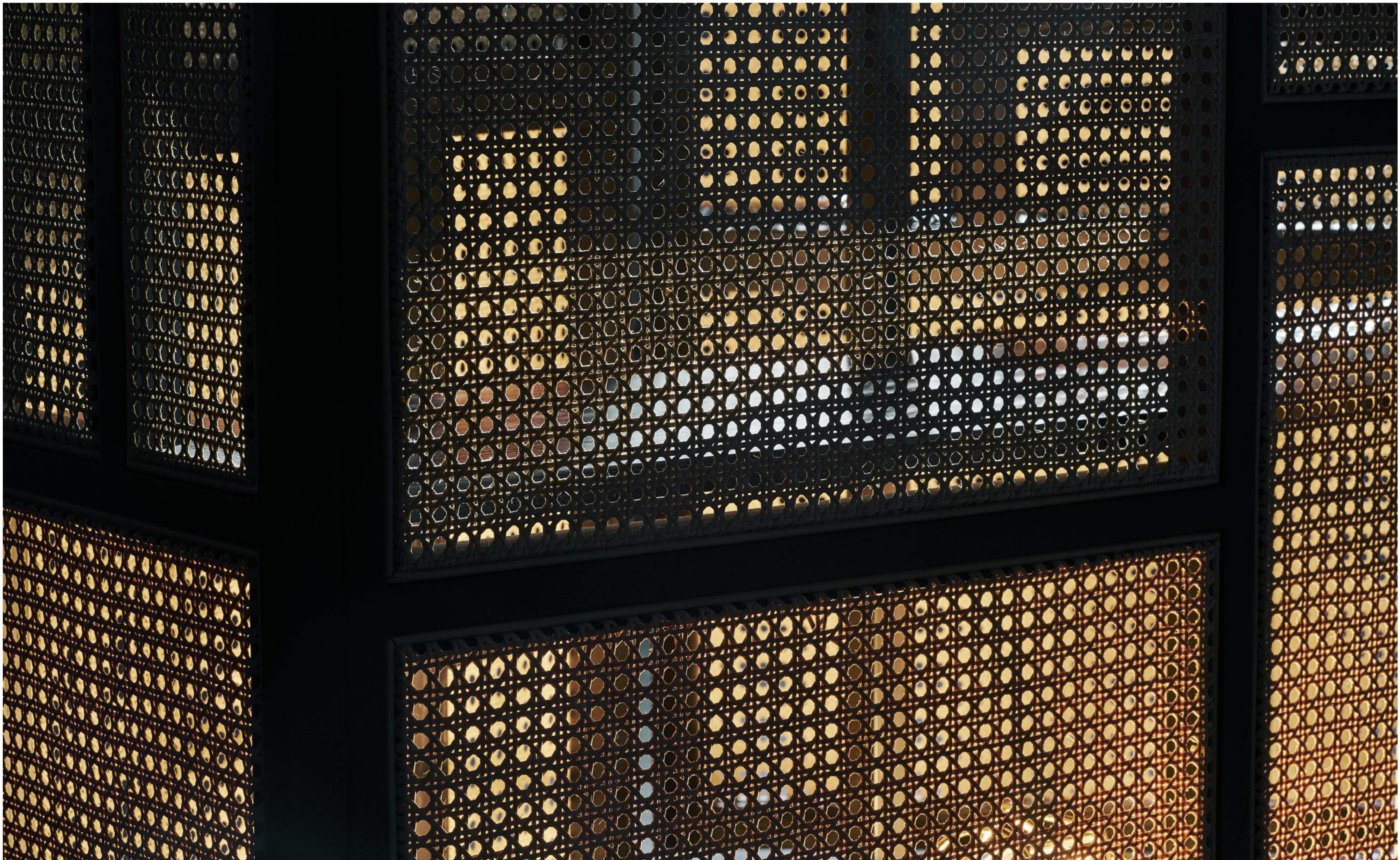
Air sideboard (p.100)



Mathieu Gustafsson's *Air* sideboard is the obvious centrepiece of the Scandinavian room. You can probably spot Mathieu's Swedish-French heritage in *Air*, a Scandinavian minimalism crossbred with a modern colonial style. We can afford to be honest, it took a while since we launched Air to what it is today, a perfect example of how to work with rattan. The woven cane gives it a visible surface and provides a sense of depth. You can glimpse what's inside, adding some careful mystery to the piece. A lamp behind the see-through doors makes *Air* shine like a diamond.

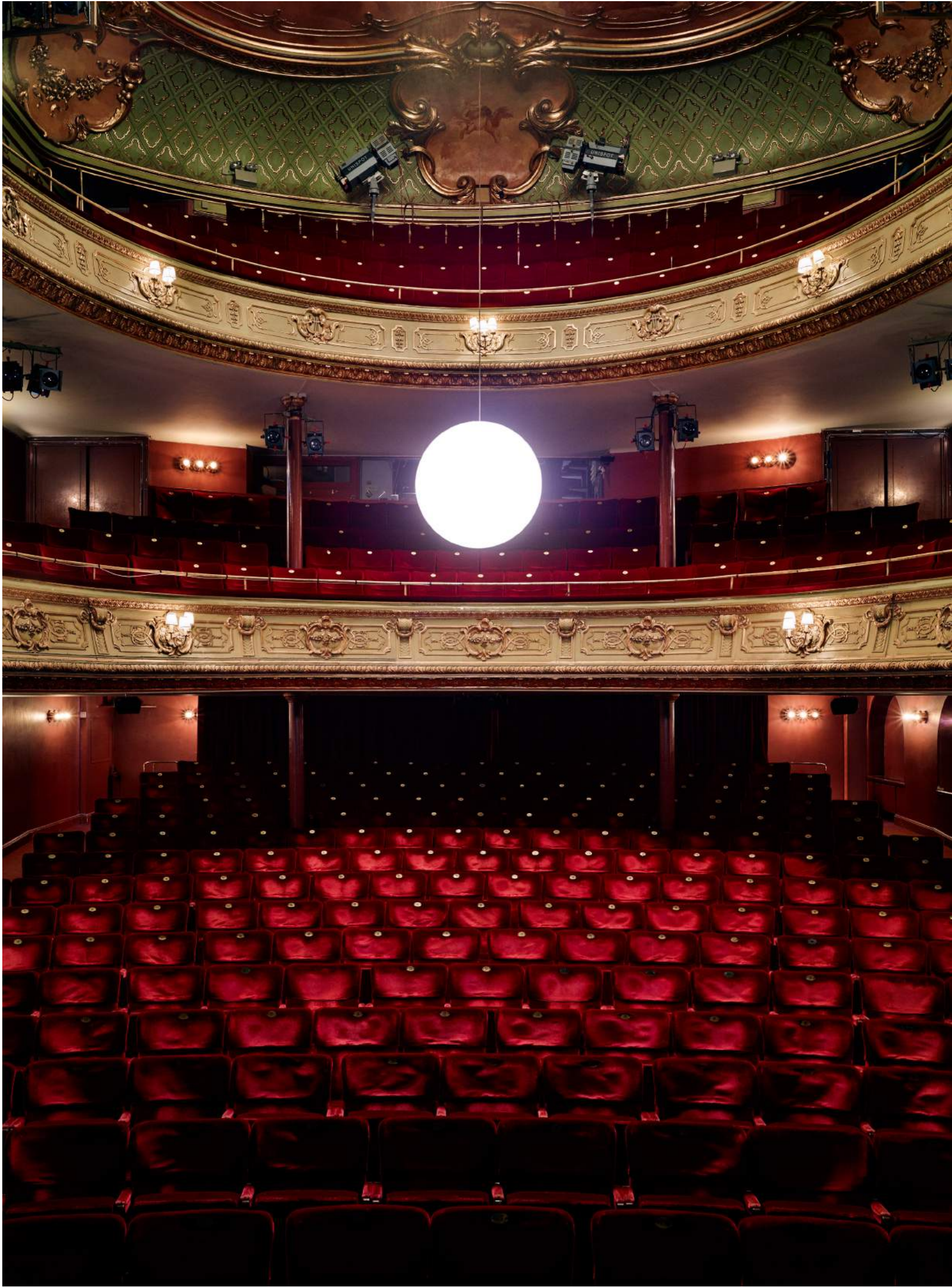
Air

by Mathieu Gustafsson



*There are many globes in the market.
But there is only one full moon.*





For more than two decades inventor, entrepreneur and designer Alexander Lervik has combined concept design, unlikely partnerships and innovations. Now he has created new ways of illuminating your life. When you first lay eyes on it you might shrug and say whatever, maybe even ask yourself “How do they dare to make another globe? There are literally thousands upon thousands on the market already”. But this one is quite unique.

Luna & Kosmos

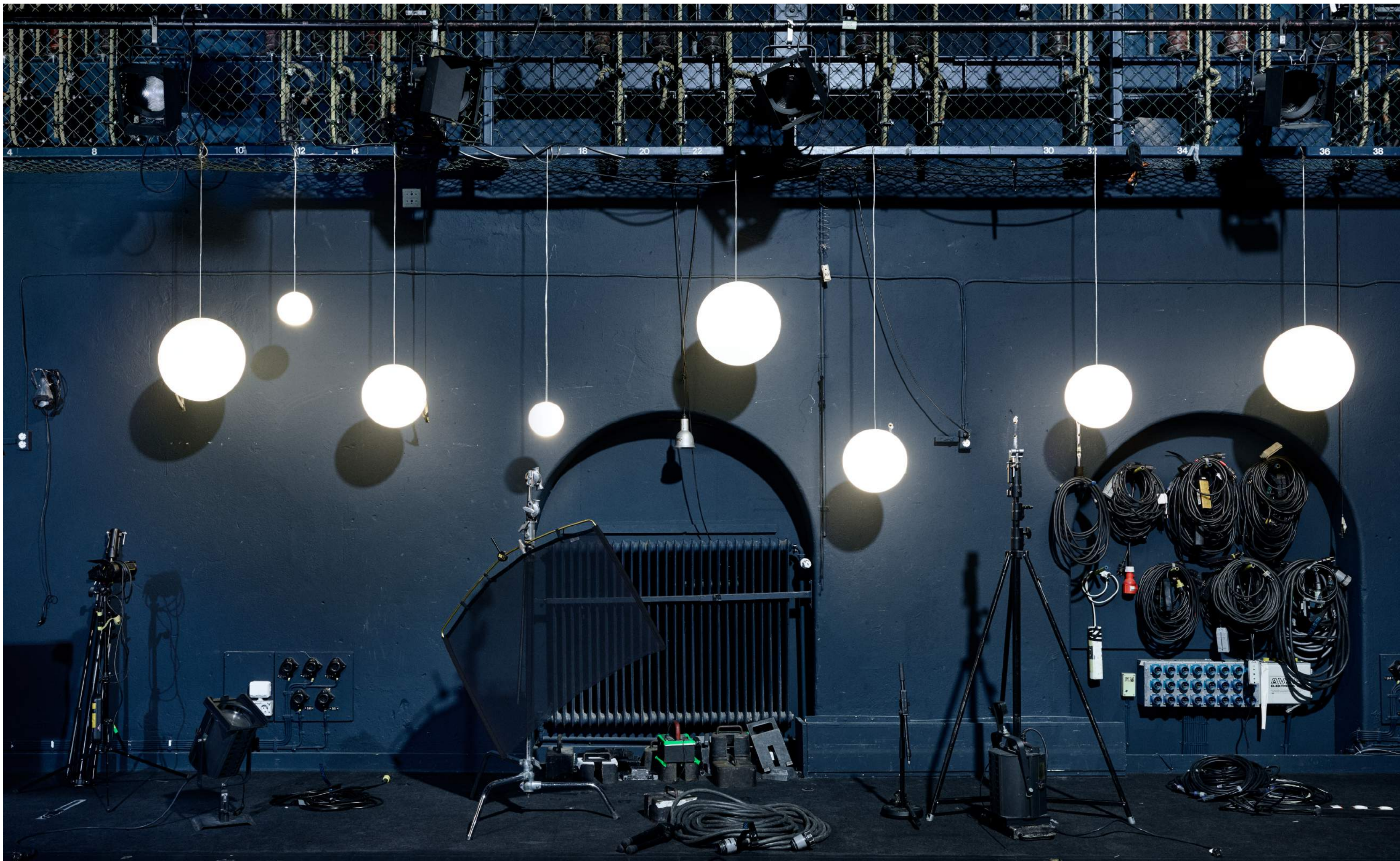
by Alexander Lervik

To paraphrase Isamu Noguchi: electricity is transformed into one of the original sources of light – our moon. This is the reinvention of functional simplicity. This is the new way to shine. It is moonlight. Unshadowed.

Luna is according to us the ultimate globe pendant. What? Yes, Alexander Lervik has created a unique globe lamp that doesn't cast any shadows, it's just pure uninterrupted light. How? All other globes on the market have some kind of metal or plastic lid to hide the cables and the hanging mechanism. *Luna* on the other hand is entirely made of glass, even the lid and the globe hangs on an acrylic cross designed to let the light shine through it while the cables and the hanging mechanism is built into just one cord. *Luna* is minimalist and functional design at its core. *Kosmos* is the optional hanger for *Luna*. If you feel like the pure moonlight of *Luna* needs a more graphic expression or if you simply want to hang the moon.



Luna lamp & Kosmos holder (p.102)





*The most laid-back lamp
in our collection.*

Mañana lamp
by Marie-Louise Gustafsson (p.101)



Trestles have a long history of bearing weight. From the logs of the forest industry to tool-laden workbenches in oily garages. The trestles Chuck Mack made for his voyeuristic *Arco* can easily bear that type of weight. We asked him if we could take his idea further and put simple table and bench tops on them and luckily, he said yes. That's why we have put our first table project on those trestles. Make it your dining table, work bench or TV stand. It depends on how you want it. Like many of our products these are modest in their expression but durable and functional. Different sizes and colours gives you the opportunity to personalize your space and look.

Arco

by Chuck Mack





Luna lamp & Kosmos holder (p.102), Blond dinnerware (p.109)

Arco trestles & table top (p.97), Basket rug (p.103), Wick Chair wood (p.94)

Ergonomically sound.

Wick Chair wood
by Jesper Ståhl & Karl Malmvall (p.94)

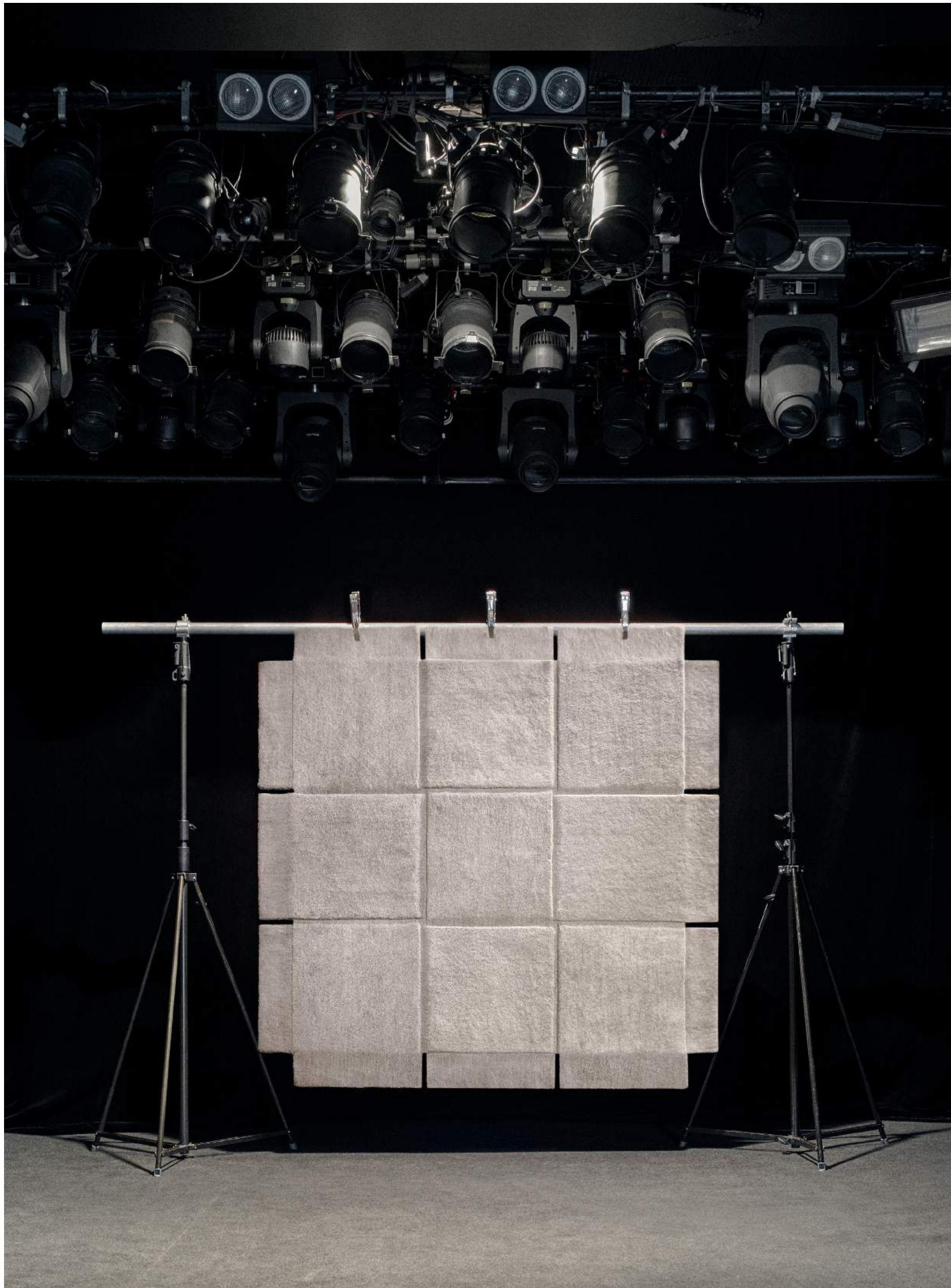




Lena Bergström is a veteran in the design game with the expertise that comes with the years. That becomes clear when you look closely at her creations. She has an utmost respect and love for the material that she is working with whether it is glass, metal or textiles. This year she is returning to Design House Stockholm with a rug that could only be achieved through superior mastery of craftsmanship. *Basket* is entirely made by hand. The special technique of hand-tufting in different directions enhances the three-dimensional feel of *Basket*. Several threads in different colours creates the desired lustre. The rug is then carefully cut by hand into a tromp l'oeil graphic pattern that pays homage to old Swedish handiwork traditions such as birch bark baskets and rucksacks. Sharp angles and soft transitions play the roles in a shadow play that is both illusion and reality.

Basket

by Lena Bergström



*Sharp angles and soft transitions
play the roles in a shadow play that is both
illusion and reality.*





← Day Dream easy chair
& leather sleeves (p.98)

Day Dream is a continuation on our *Day* sofa and easy chair series. It's the same affordable, everyday pieces of furniture but in new dreamy colours and materials. Like our table tops *Day Dream* is a result of developing a simple idea. We wanted to make a comfortable high-quality sofa, it's as simple as that. The design lets you relax and its minimalist look offers you the possibility of playing with different expressions. New for this year are also optional leather sleeves for a customized look and a footrest for extra comfort. They're built on solid wooden frames with stained oak legs and upholstered with a high-quality polyester fabric. "Polyester?", you might say. Yes, polyester makes a strong and good-looking fabric that won't wear over time compared to organic materials. And oh yeah, we've colour-matched the fabric with the frame because it looks nice.

Day & Day Dream

by Design House Stockholm Studio

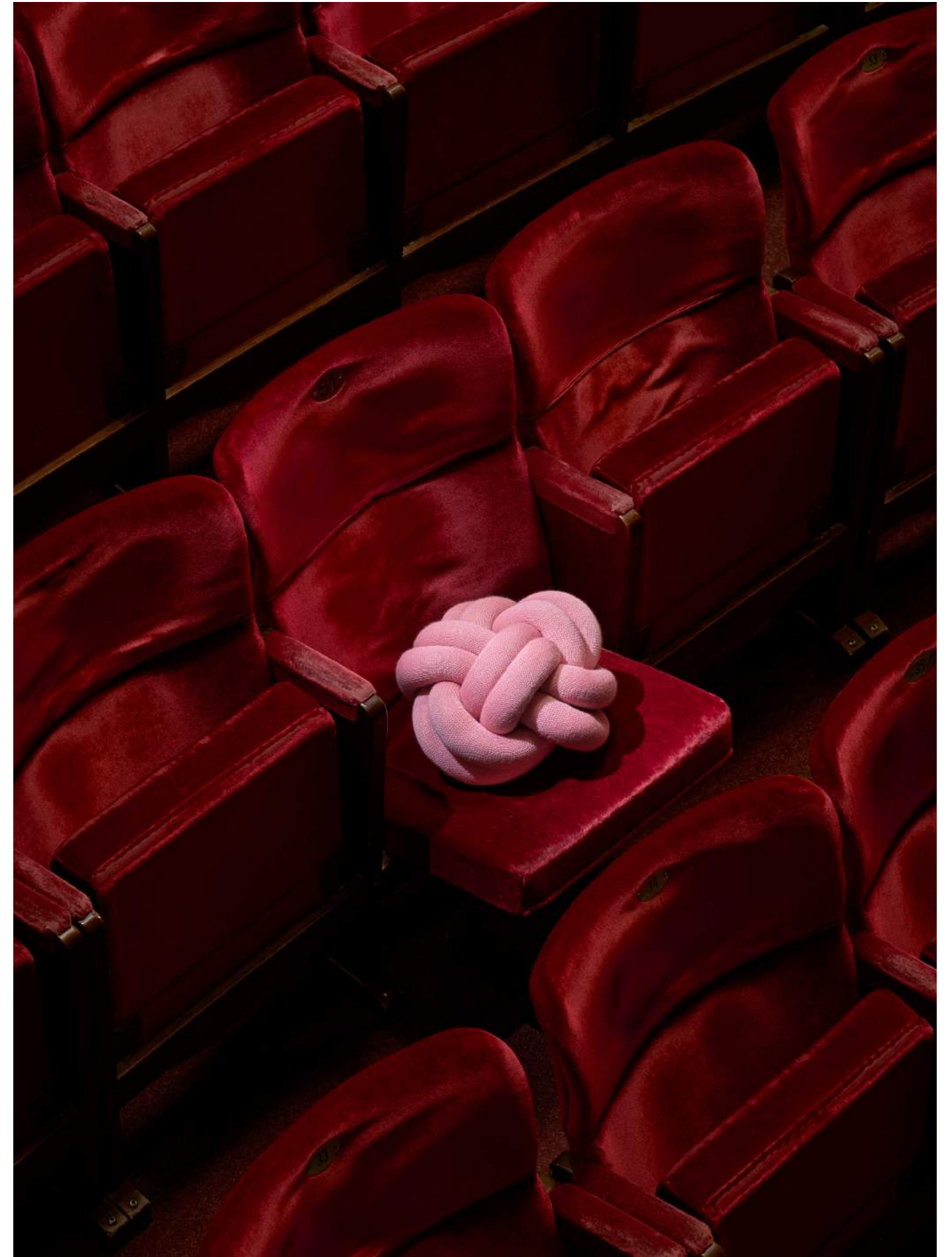


Cord Lamp by Form Us With Love, Björk rug & stool by Lena Bergström

Day Dream sofa & leather sleeves (p.98), Knot cushion (p.104)



Day easy chair & footrest (p.99)



Knot cushion (p.104)

*More than 30 000
people of our audience are relaxing
on a Knot cushion.*

Knot cushion
by Ragnheiður Ösp Sigurðardóttir (p.104)



The organization Kids Ark was founded in 2000 in the Chiang Mai province by Swedes Rita Holm Gustafsson and Allan Gustafsson with the ambition to improve the desperate situation faced by children who had lost their parents due to HIV/Aids. What started as a sponsorship programme to enable orphaned children living with relatives to attend school has grown to include activities that make it possible for women to work together to increase their incomes by making crafts, thereby improving the home conditions for the orphaned children. The cushions are the results of a long-term collaboration between designer Nina Jobs, Kids Ark and the women co-operative that the organization supports. The collaboration will continue and for this year we've added three new vibrant colours. The cushions are hand-woven and are a mix of traditional Thai weaving techniques and Nina's Scandinavian aesthetics.

Melange

by Nina Jobs







A kitchen device used since ancient times. Looking back at history, *Jessika Källeskog* wanted to reshape tradition. She thought of a different form, a calmer motion. *Tbndo* is both sculpture and tool. It is something completely unique and yet very familiar. But, maybe the most important part: Does it work? Yes, of course it works. We are thorough when we test our products. That's why we know that when you grind, for instance black pepper, you can actually feel how the peppercorns are being grinded so you can fine adjust the coarseness. And *Tbndo* is more than just a device for grinding herbs and spices: It will be the centre-piece of your kitchen, the hot topic at your dinner parties.

Tondo

by Jessika Källeskog





← Stockholm kitchen knives
by Jesper Ståhl (p.109)

The things we use the most in the kitchen are forks, knives, glasses and so on. Today's modern homes seldom have display cabinets filled with the fine china only used at fancy dinner parties. Instead we want things that we can use every day on every occasion. Function is the most important aspect of kitchen tools. The original idea of Scandinavian design was to create beautiful and durable everyday objects that was affordable. Today we can see that a lot of people want lesser and lesser things in their lives, but the things they do have should be of superior quality. Our kitchen series is a collection of products that cater to those needs.

Kitchen

*by Jesper Ståhl,
Claesson Koivisto Rune,
& Reliefgruppen*

Jesper Ståhl is a very meticulous man. It goes to show when you know the facts of his Stockholm series. Rather than being made from punched blanks — the commonest form of cutlery — the steel is hot-forged and then fitted with a matt black thermoplastic handle. Designing a collection of cutlery and kitchen tools is, according to Jesper the ultimate design project because it involves aspects of ergonomics and production, to find right balance and weight.

Blond has been with us for 20 years and we think we know why; our customers have noticed that the plates and bowls and cups have a long life-span in their homes. This year we have updated Blond with a grey colour but the classic pattern stays the same. We’ve also updated Claesson Koivisto Rune’s Melamine bowl in the same colour.



Stockholm cutlery by Jesper Ståhl (p.109)



Two ideas in harmony.

Melamine bowl by Claesson Koivisto Rune (p.108)
Stockholm salad servers by Jesper Ståhl (p.108)





Our Greenery series provides nearly endless opportunities to create a green home, regardless of size or location. These products find themselves somewhere in the borderland between furniture, objects and sculptures. The designers of the collection come from a diverse range of backgrounds and countries, but they share a newly born ambition to meld nature, the object and the home into one. This is our definition of urban gardening.

Greenery

*by Atelier 2+, Caroline Wetterling
& Eva Schildt*



Atelier 2+ is familiar with working in the borderland called Greenery. Their goal is to create furniture that invites nature inside your home, and that makes it possible, even in a concrete-laden urban jungle, to have a garden – even if you have neither a balcony nor nature nearby.

When the *Greenhouse* is filled with plants, the plants require your attention in order to thrive. In return, *Greenhouse* hopefully offers a moment’s relaxation, thus serving a greater purpose than simply a place to rest your gaze.

We were not entirely sure how *Greenhouse* would be received, and perhaps no one thought they needed a *Greenhouse*, but today we know with certainty that we’ve catered to a need that plant-loving people felt.

Flower Tray is their latest addition to the collection and with its Scandinavian and Asian aesthetic, it is a modern way to arrange flowers on the table. Plant your blooms in it to create the perfect slice of nature itself. It sure looks nice with an ash stand to hold up the tray but it also fulfils a functional purpose: It lets air circulate around the pot so that it doesn’t leave any damp spots on the surface it stands on.



Greenhouse Mini by Atelier 2+ (p.106)





Greenhouse by Atelier 2+ (p.106)



Grow greenhouse by Caroline Wetterling (p.107)

Caroline Wetterling’s glass greenhouses is another example of how to think about plants. Thousands of people have planted seeds in the small glass house and watched it spring into life. In contrast with the ever-increasing pace of life, Caroline wanted to create something that called attention to the slow rate of plants growing, while simultaneously enhancing their symbolic value. With *Grow*, you can create complete, imaginative miniature worlds.

Eva Schildt’s vases are newcomers to our green series. Eva, however, has been part of our family for a long time. Her designs create space for nature. *BonBon* is inspired by the timeless shape of an amphora – and by beautifully wrapped treats, as the name reveals. The vases are hand-made using three-layer glass, one of the finest glass blowing techniques there is. Instead of simply spraying the wanted colour on the glass, three layers of different colour makes up the vase, which creates a luminous semi-opaqueness.



Grow greenhouse by Caroline Wetterling (p.107)



BonBon vase by Eva Schildt (p.107)

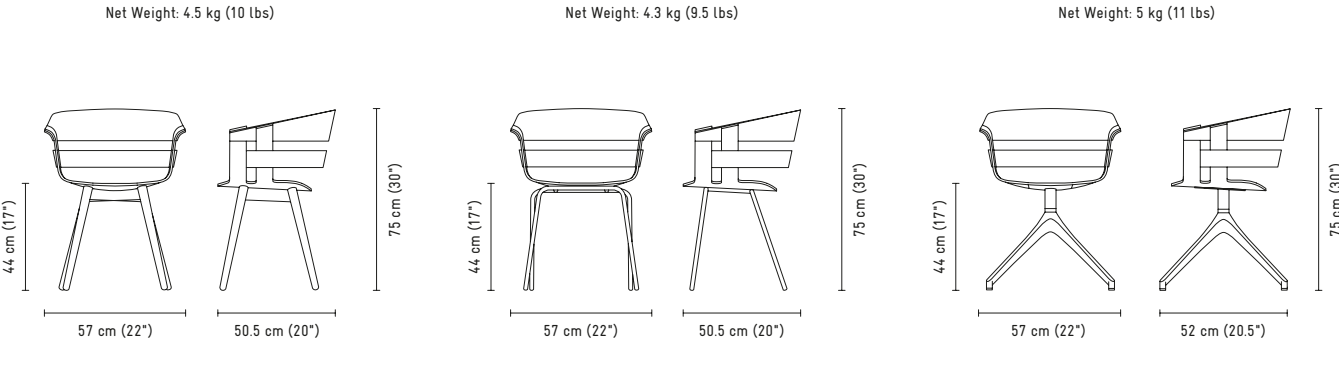
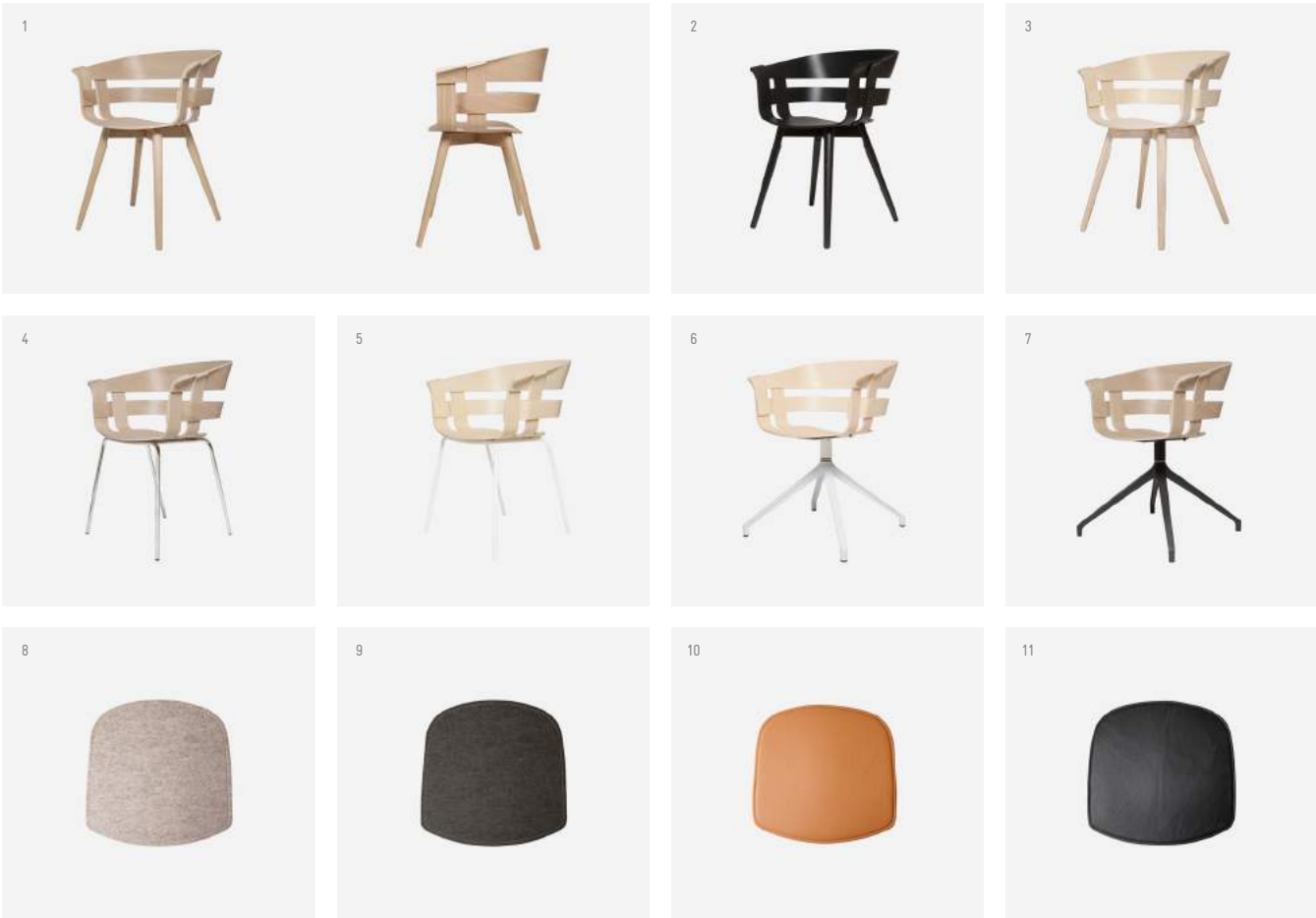
Product Information

Wick Chair wood, tube, swivel & seat cushion
Designed by Jesper Ståhl & Karl Malmvall

DESCRIPTION: Wick chair is a modular shell chair inspired by traditional Swedish wood-chip baskets. An ergonomic all-round chair with several different options to customise it for home, offices, conference centres and hotels.

MATERIAL: Seat: oak/ash veneer. Legs: solid wood/lacquered or chromed steel tubing/metal swivel base. Seat cushion: 100% wool or 100% leather.

OTHER INFORMATION: Delivered ready-mounted. Made in Sweden.



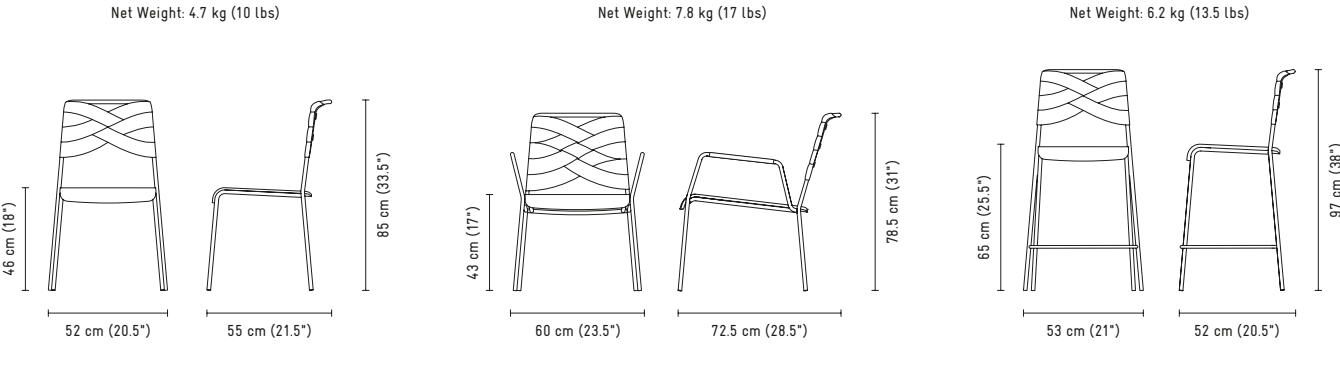
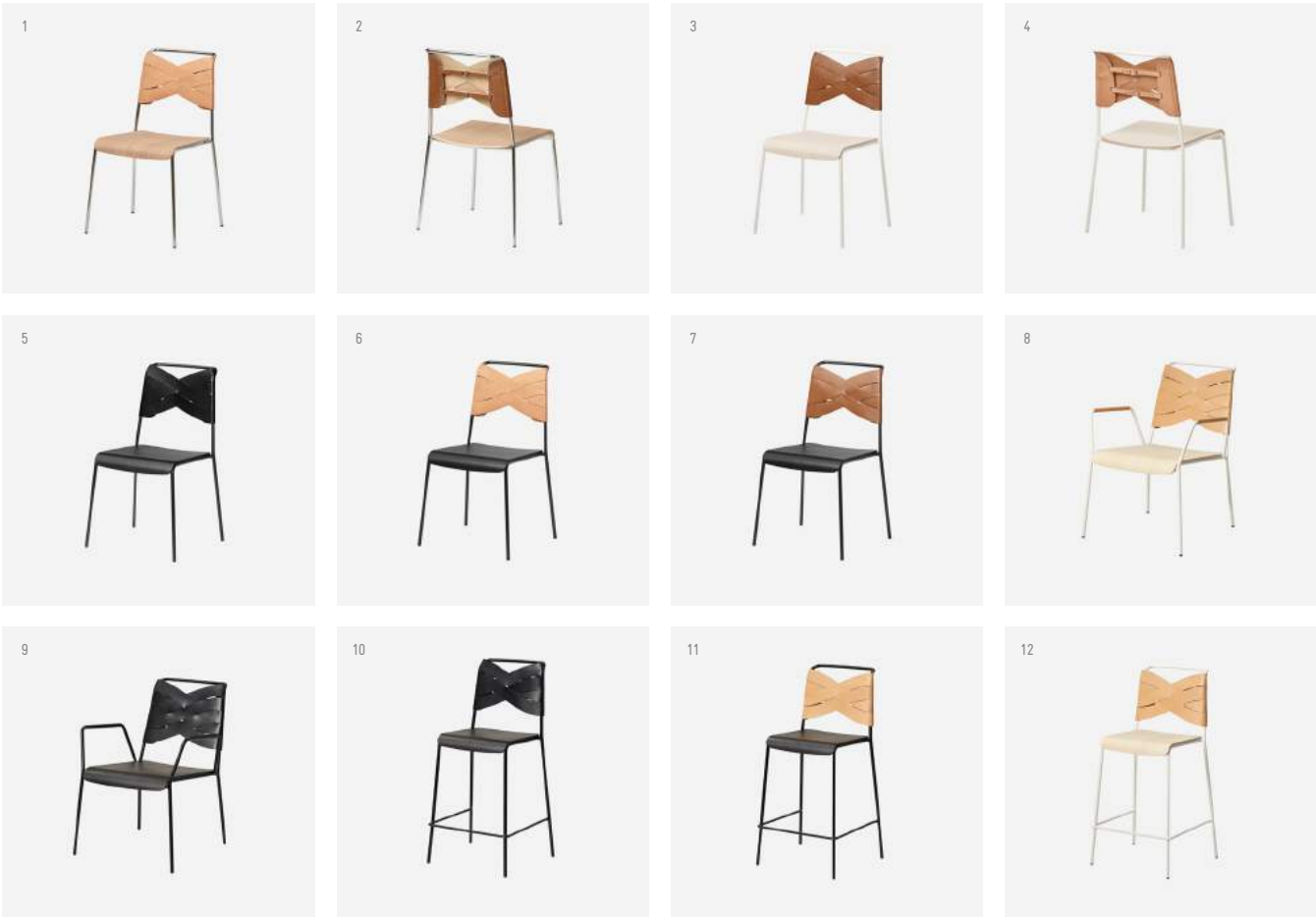
- | | | | |
|--|---|---|---|
| 1 Oak seat, oak legs (2370—8484) | 4 Oak seat, chrome legs (2369—8450) | 7 Oak seat, dark grey swivel base (2371—8429) | 10 Brown leather seat cushion (2368—0400) |
| 2 Black ash seat, black ash legs (2370—1008) | 5 Ash seat, white metal legs (2369—8150) | 8 Beige felt seat cushion (2367—0400) | 11 Black leather seat cushion (2368—1000) |
| 3 Ash seat, ash legs (2370—8181) | 6 Ash seat, white swivel base (2371—8130) | 9 Anthracite felt seat cushion (2367—1100) | |

Torso chair, lounge chair & bar stool
Designed by Lisa Hilland

DESCRIPTION: The chairs are modest in their expression yet they are visually striking with their woven leather detailing. The new additions are dressed for the party and you'll find them in sophisticated bars and salons.

MATERIAL: Frame: Steel tubing. Seat: Ash/oak veneer. Back: Natural/Black/Cognac Leather.

OTHER INFORMATION: Stackable. Made in Sweden.



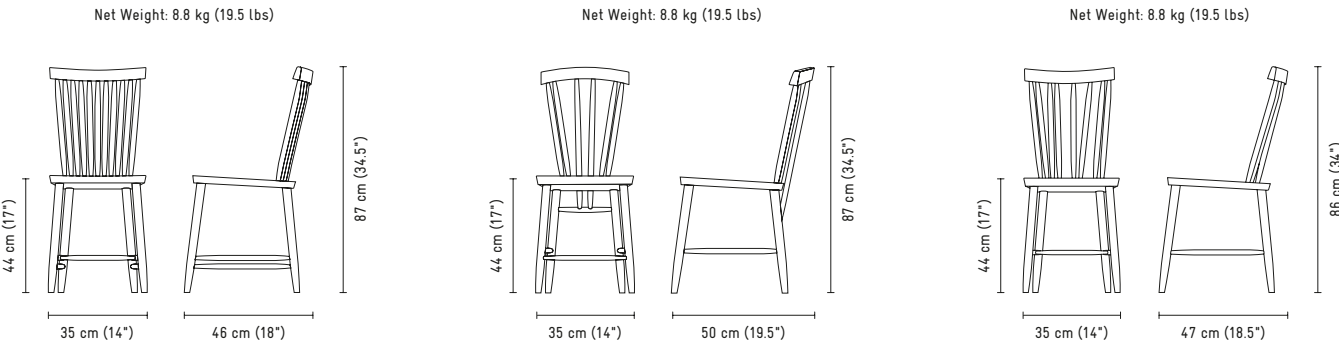
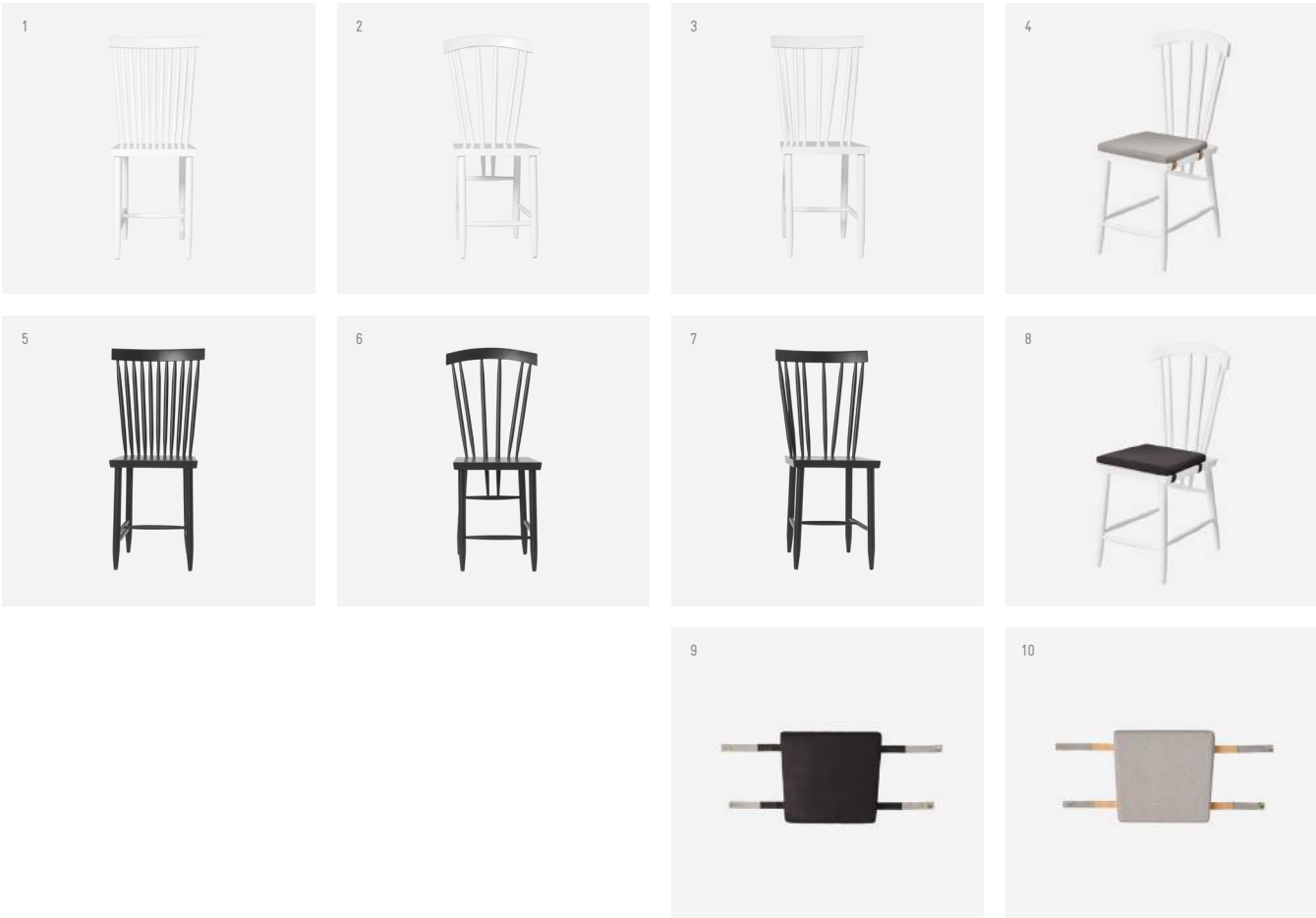
- | | | | |
|---|---|--|--|
| 1 Oak seat, natural leather (2426—8415) | 4 Ash seat, natural leather (2426—8100) | 7 Black seat, cognac leather (2426—1011) | 10 Black seat, black leather (2497—1000) |
| 2 Oak seat, cognac leather (2426—8400) | 5 Black seat, black leather (2426—1000) | 8 Ash seat, natural leather (2498—8100) | 11 Black seat, natural leather (2497—1015) |
| 3 Ash seat, cognac leather (2426—8111) | 6 Black seat, natural leather (2426—1015) | 9 Black seat, black leather (2498—1000) | 12 Ash seat, natural leather (2497—8100) |

Family Chairs & seat cushion
Designed by Lina Nordqvist

DESCRIPTION: The boisterous Family chairs have been upgraded for 2018 with cushions designed by the chairs designer Lina Nordqvist.

MATERIAL: Beech wood. PU lacquer.
Seat cushion: 55kg/m3 polyether core, shell 100% polyester/vinyl.
Straps: leather/nylon.

OTHER INFORMATION: Made in Thailand.



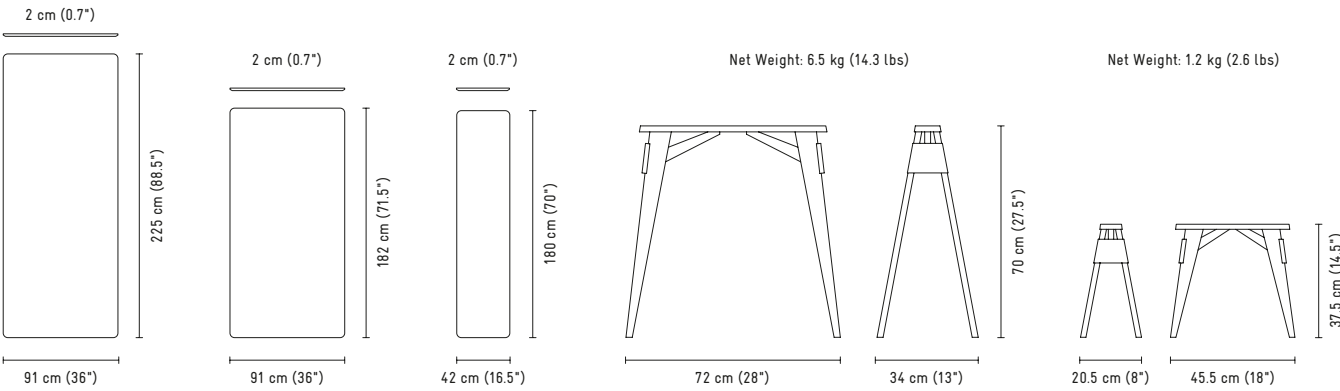
- 1 Family chair No.2, white (2217—0100)
- 2 Family chair No.3, white (2218—0100)
- 3 Family chair No.4, white (2219—0100)
- 4 Seat cushion light grey (2499—1200)
- 5 Family chair No.2, black (2217—1000)
- 6 Family chair No.3, black (2218—1000)
- 7 Family chair No.4, black (2219—1000)
- 8 Seat cushion black (2499—1000)
- 9 Seat cushion black (2499—1000)
- 10 Seat cushion light grey (2499—1200)

Arco trestles, table top & bench top
Designed by Chuck Mack

DESCRIPTION: Chuck Mack made Arco Desk and the rest is history. The trestles made us think of taking his idea further. So, we made table and bench tops. The table and bench tops are made in medium-density fibreboard with a veneer and is supported by two steel rails.

MATERIAL: Table top: Veneered MDF (ash/oak/black stained ash), Powder coated metal square tube. Bench top: Veneered MDF (ash/oak/black stained ash). Trestles: Solid oak, solid ash, solid black stained ash.

OTHER INFORMATION: Three small trestles for 180x42 cm bench top.



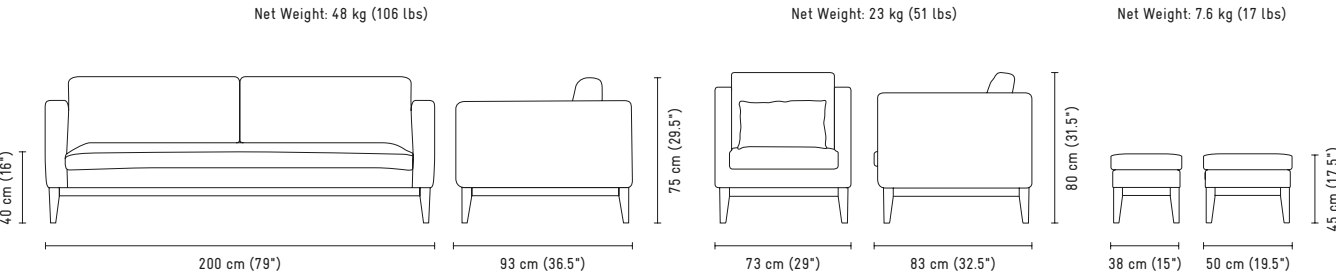
- 1 Bench top, ash (2509—8100)
- 2 Trestle small, black stained ash (2505—1000)
- 3 Trestle small, ash (2505—8100)
- 4 Trestle small, oak (2505—8400)
- 5 Trestles, white, set of 2 (2179—0100)
- 6 Trestles, black, set of 2 (2179—1000)
- 7 Trestles, ash, set of 2 (2179—8100)
- 8 Trestles, oak, set of 2 (2179—8400)
- 9 Table top, black, 182x91x2 cm (2506—1000)
- 10 Table top, ash, 182x91x2 cm (2506—8100)
- 11 Table top, oak, 182x91x2 cm (2506—8400)

Day Dream sofa, easy chair & footrest
Designed by Design House Stockholm Studio

DESCRIPTION: Day Dream is a continuation on our Day sofa and easy chair series. It's the same affordable, everyday pieces of furniture but in new dreamy colours and materials. They are built on solid wooden frames with stained oak legs and upholstered with a high-quality fabric. Optional leather sleeves for a customized look and a footrest for extra comfort are available.

MATERIAL: Fabric composition: 100% Polyester, Martindale: >40,000, Weight: 390g/m2. Frame: solid pine + laminated wood. Seat: high resilience foam 35kg/m³, upholstery foam and non-woven fabric. Back: foam 28kg/m³, non-woven fabric. Legs: Stained solid oak.

OTHER INFORMATION: As a special order Day Dream is also available in UK foam. Made in Estonia.



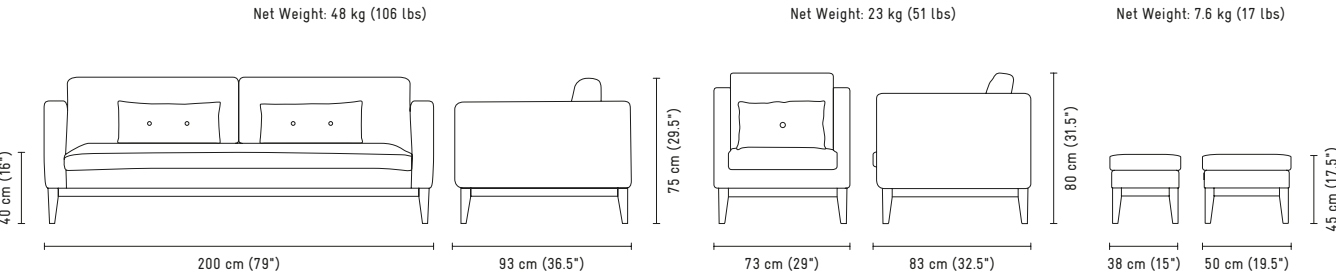
- | | | | |
|--------------------------------------|-------------------------------------|-----------------------------------|---------------------------------|
| 1 Sofa, light grey (2467—1200) | 4 Sofa, dark grey (2467—1500) | 6 Footrest, dark grey (2471—1500) | 8 Easy chair, green (2461—6000) |
| 2 Easy chair, light grey (2461—1200) | 5 Easy chair, dark grey (2461—1500) | 7 Sofa, green (2467—6000) | 9 Footrest, green (2471—6000) |
| 3 Footrest, light grey (2471—1200) | | | |

Day sofa, easy chair & footrest
Designed by Design House Stockholm Studio

DESCRIPTION: The Day sofa and easy chair are affordable, everyday pieces of furniture built on a solid wooden frame with oak legs, and upholstered with a high-quality fabric. Optional leather sleeves for a customized look and a footrest for extra comfort are available.

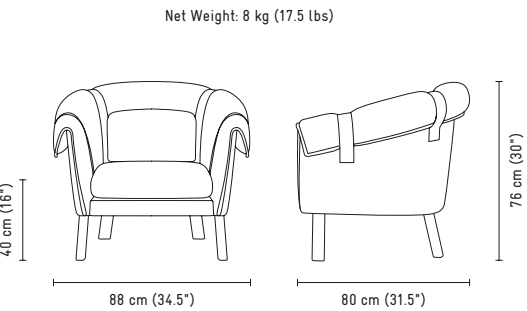
MATERIAL: Legs: solid lacquered oak. Frame: solid pine + laminated wood. Seat: high resilience foam 35 kg/m³, upholstery foam and non-woven fabric. Back: foam 28 kg/m³, non-woven fabric. Fabric: 67% wool, 26% nylon, 7% polyester. Martindale: >100,000. Weight: 370 g/m².

OTHER INFORMATION: Two pillows are included with the sofa. one pillow is included with the easy chair. Made in Vietnam.



- | | | |
|--------------------------------------|------------------------------------|-------------------------------------|
| 1 Sofa, Light grey (2314—1200) | 3 Footrest, light grey (2469—1200) | 5 Easy chair, dark grey (2335—1500) |
| 2 Easy chair, light grey (2335—1200) | 4 Sofa, Dark grey (2314—1500) | 6 Footrest, dark grey 2469—1500) |

Ram easy chair
Designed by Fredrik Färg & Emma Blanche



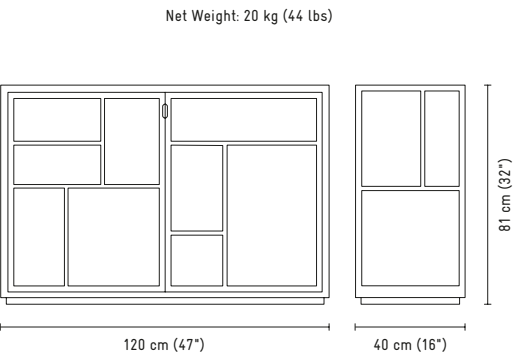
DESCRIPTION: Ram is simultaneously a club chair with four notable leather buckles that extend from the seat up over the arm supports.

MATERIAL: Upholstery fabric, leather, ash legs.

OTHER INFORMATION: Made in Sweden.



Air sideboard
Designed by Mathieu Gustafsson



DESCRIPTION: Air is a sideboard for the centre of the room. It combines a graphic pattern of ribs with natural cane inlays. Air can be used as a freestanding room divider or placed against a wall. Cable management and adjustable feet.

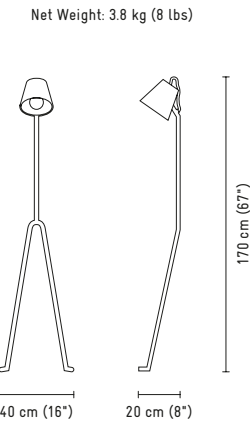
MATERIAL: Air Stained black/cane: Solid ash, ash veneered MDF and cane. Air Oak/ cane: Solid oak, oak veneered MDF and cane. Air White: Lacquered MDF, lacquered solid beech frame and cane.

OTHER INFORMATION: Delivered ready-mounted. Made in Vietnam.



A1 Ram, beige (2428—1200) B1 Air, black/cane (2359—1000) B3 Air, white/cane (2359—7900)
A2 Ram, dark grey (2428—1500) B2 Air, oak/cane (2369—8400)

Mañana lamp
Designed by Marie-Louise Gustafsson



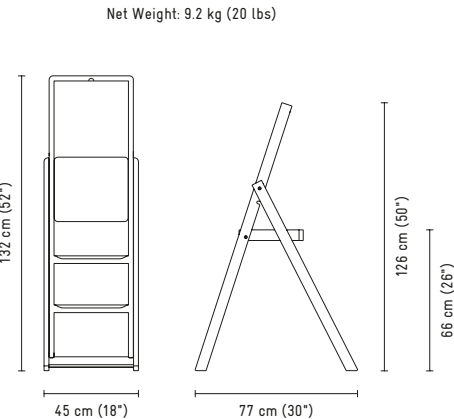
DESCRIPTION: Like a character from a comic strip relaxing against the wall. The lamp seems to have stepped right out of the sketch book with its pencil thin, graphite lines.

MATERIAL: Lacquered steel. Knock down. Dimmer foot switch.

OTHER INFORMATION: The lampshade is adjustable sideways. Recommended bulb: E27. Halogen Globe Bulb (Art. No. 1633-0000) included.



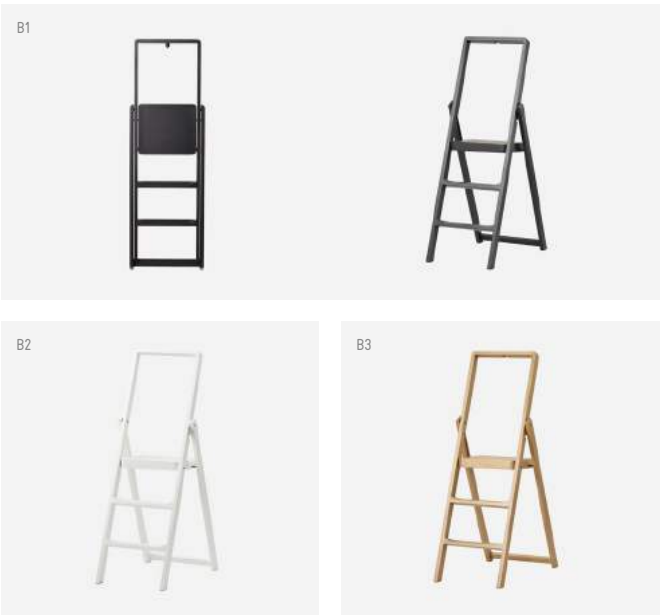
Step stepladder
Designed by Karl Malmvall



DESCRIPTION: Stepladder that you can hang on the wall rather than putting in a closet when not used. There's a small hook included for the purpose.

MATERIAL: Oak/beech.

OTHER INFORMATION: Not for commercial use, maximum load 100kg. Made in Thailand. Also available in high mirror lacquered black & white.



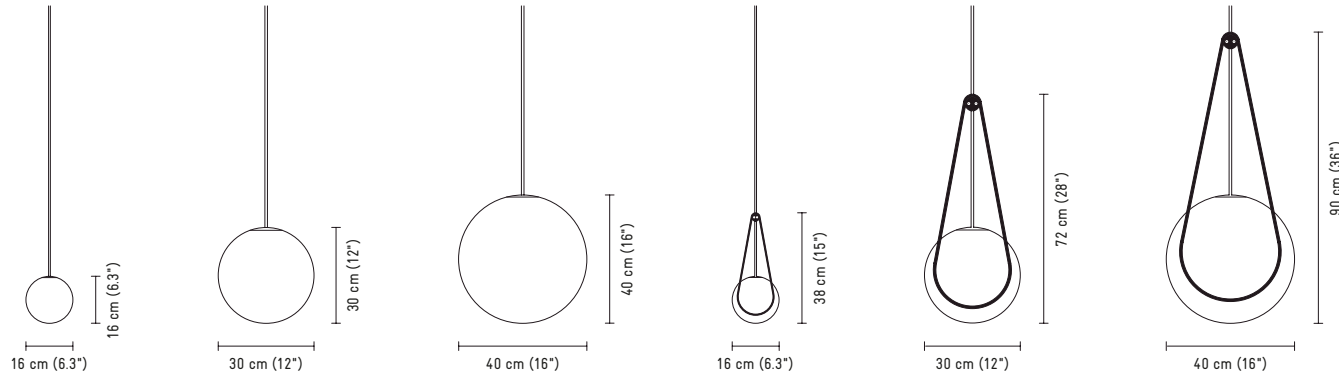
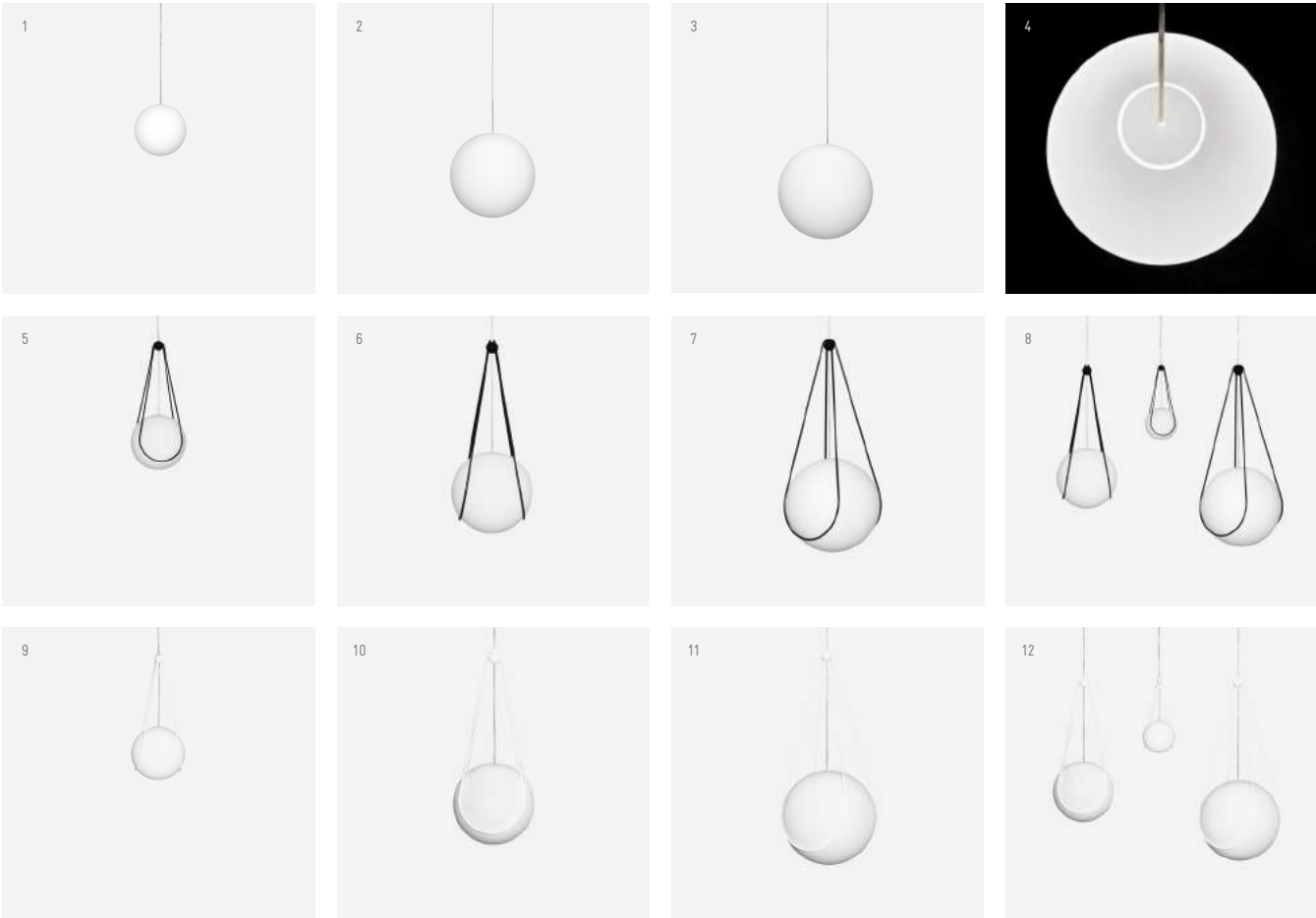
A1 Mañana, dark grey (1627—1100) B1 Step, black stained oak (1749—1090) B3 Step, Oak (1749—8400)
A2 Mañana, white (1627—0100) B2 Step, white stained oak (1749—0190)

Luna lamp & Kosmos hanger
Designed by Alexander Lervik

DESCRIPTION: Luna is the only globe pendant that doesn't cast any shadows. The globe is made out glass with a glass lid and hung on transparent acrylic cross. Cables and hanging wire are inside the cord. Kosmos is the optional hanger for a more graphic expression.

MATERIAL: Globe: Mouth blown opal glass. Cable: Transparent PVC-cord with steel wire core. Cross: Acrylic. Kosmos holder: Powder coated metal frame.

OTHER INFORMATION: 6-meter cord (with integrated suspension wire) can be ordered on special request. Contact your DHS sales representative.



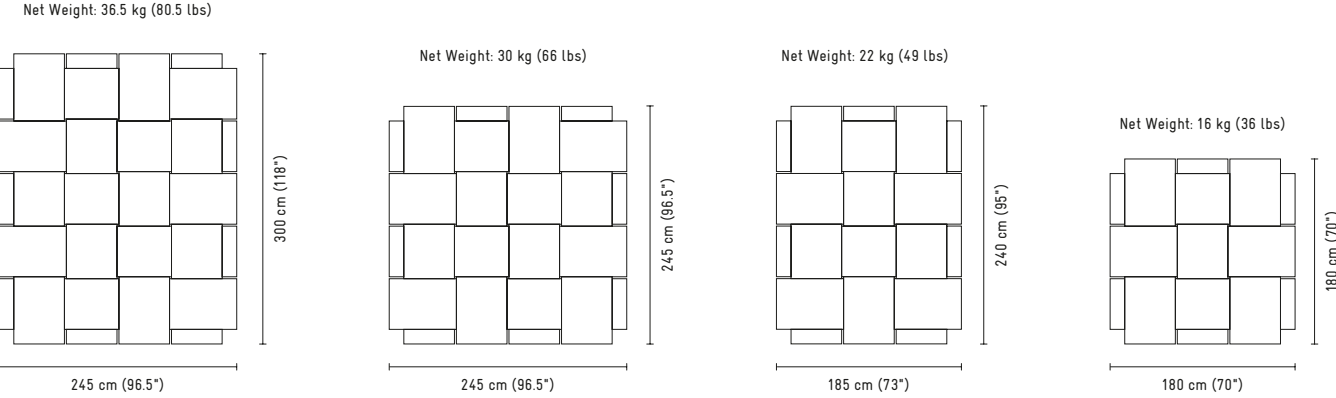
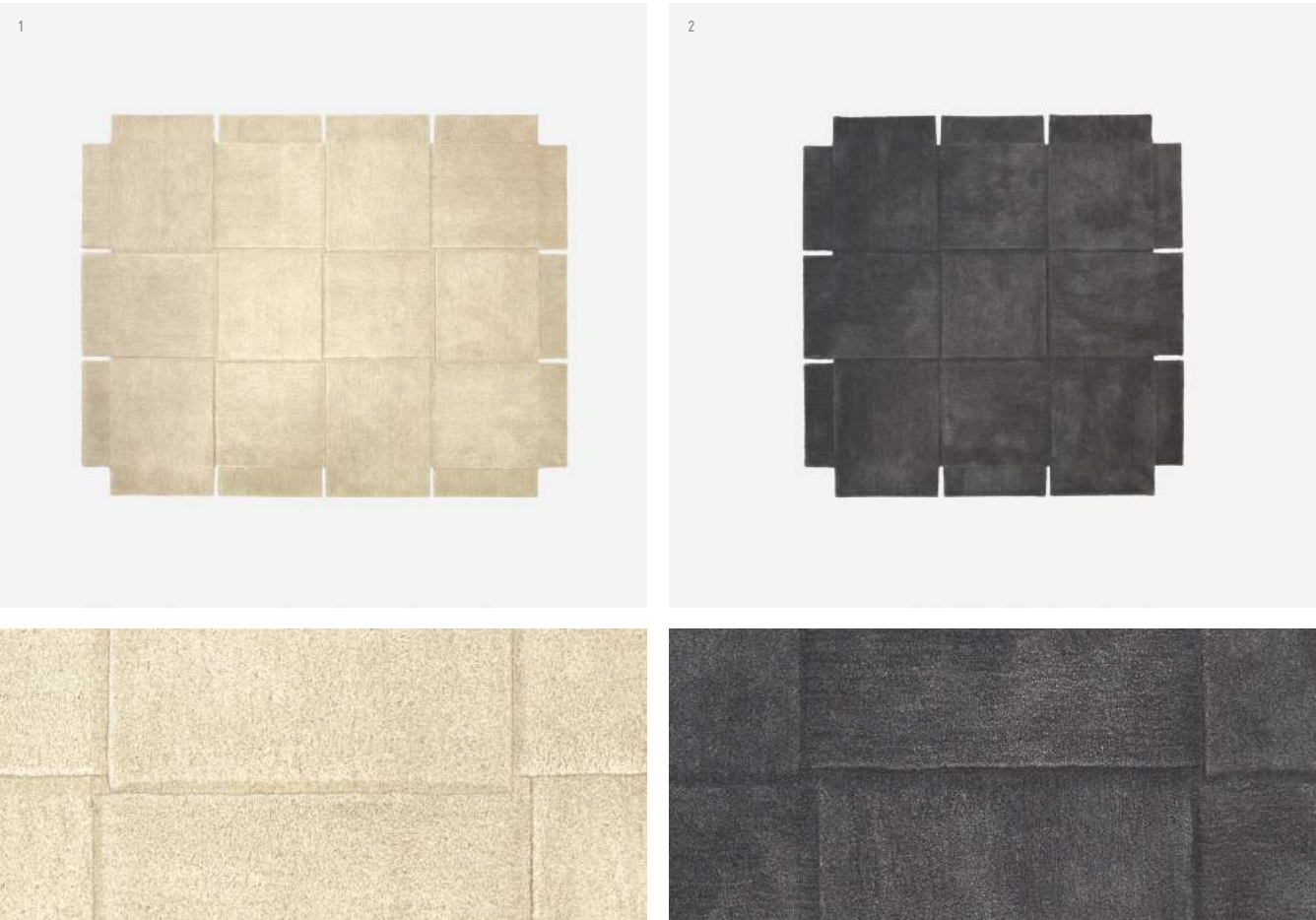
- | | | | |
|---------------------------|------------------------------------|---|--|
| 1 Luna small (2483-0100) | 4 Luna top detail | 7 Kosmos, black large (2494-1000) | 10 Kosmos, white medium (2493-0100) |
| 2 Luna medium (2484-0100) | 5 Kosmos, black small (2492-1000) | 8 Kosmos, black (small, medium & large) | 11 Kosmos, white large (2494-0100) |
| 3 Luna large (2485-0100) | 6 Kosmos, black medium (2493-1000) | 9 Kosmos, white small (2492-0100) | 12 Kosmos, white (small, medium & large) |

Basket rug
Designed by Lena Bergström

DESCRIPTION: The unique techniques of weaving and cutting creates a high-quality wool rug that is still affordable. It comes in four sizes but can be customized as a special order in other sizes.

MATERIAL: Hand tufted carpet, 100% wool. Backing: cotton backing.

OTHER INFORMATION: Rug rolled in black canvas bag with handles. Made in India.



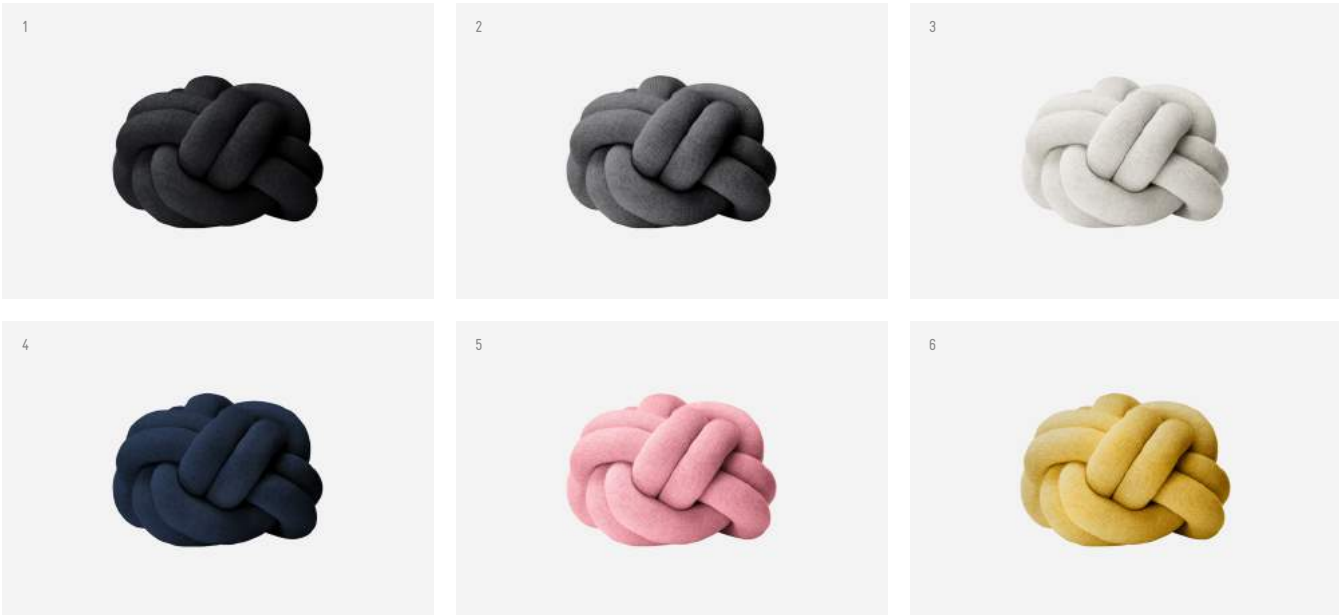
- | |
|---|
| 1 Basket, beige, 185x240 cm (2501-0400) |
| 2 Basket, grey, 180x180 cm (2500-1100) |

Knot ^{cushion}
Designed by Ragnheiður Ösp Sigurðardóttir

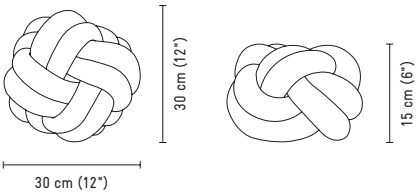
DESCRIPTION: The famous Knot cushion is made from a knitted tube, several metres in length. Comfortable and elegant to behold.

MATERIAL: 50% wool, 50% acrylic. Filling: 100% polyester.

OTHER INFORMATION: Made in Lithuania.



Net Weight: 0.65 kg (1.5 lbs)



- | | | |
|--------------------------------|--------------------------------|----------------------------|
| 1 Knot, anthracite (2351—1300) | 3 Knot, white grey (2351—0200) | 5 Knot, pink (2351—4600) |
| 2 Knot, grey (2351—1100) | 4 Knot, navy (2351—5400) | 6 Knot, yellow (2351—2000) |

Melange ^{cushion}
Designed by Nina Jobs

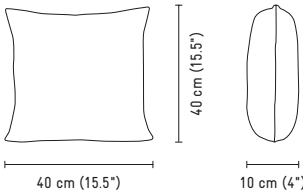
DESCRIPTION: Hand-made cushions. Each cushion has two different patterns on front and back. The Melange cushion is the result of a collaboration between designer Nina Jobs, the Kids Ark organisation in northern Thailand and Design House Stockholm.

MATERIAL: 60% viscose, 40% cotton.

OTHER INFORMATION: Available in other colours/patterns.



Net Weight: 0.2 kg (0.5 lbs)



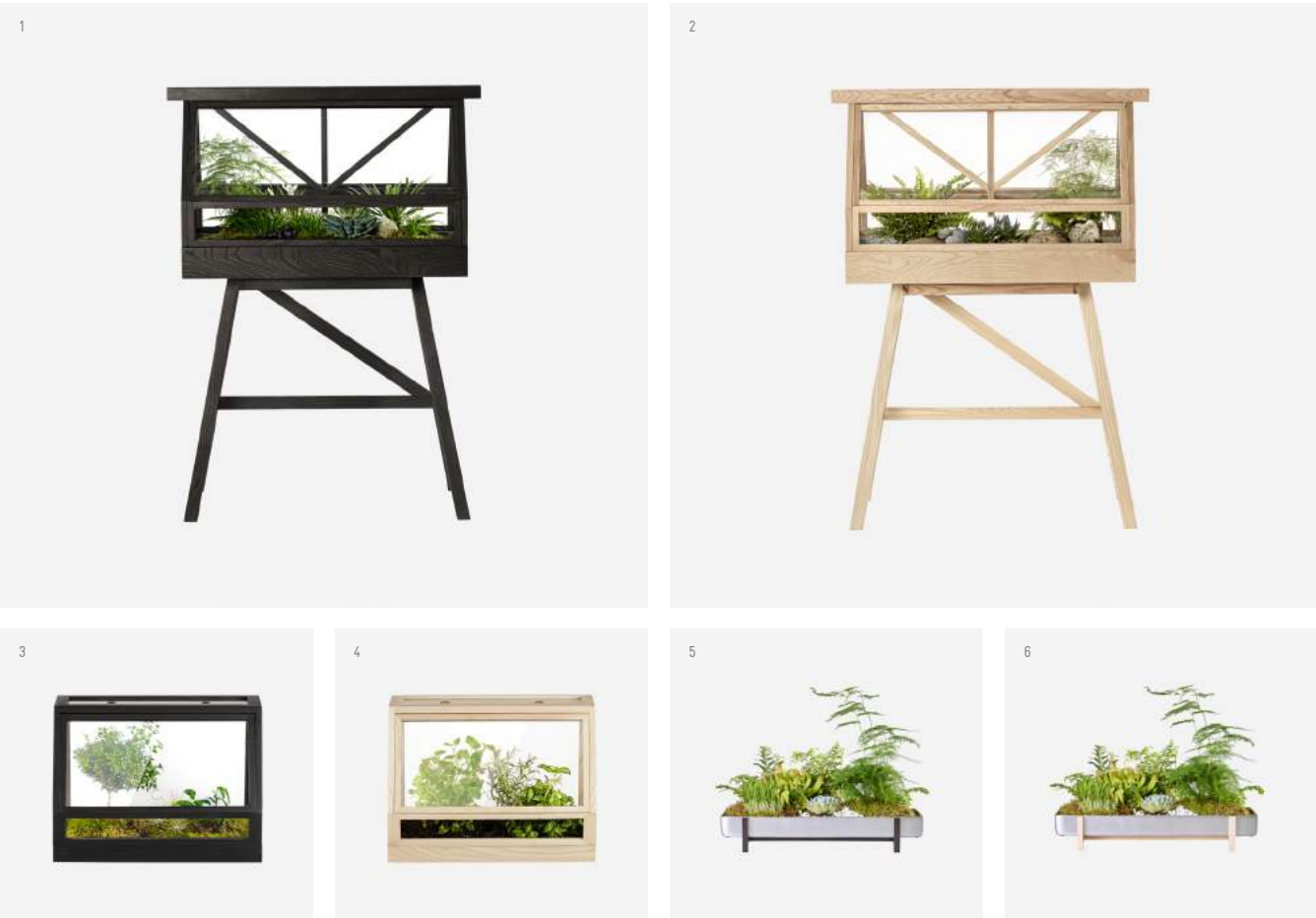
- | | | |
|--|---|---|
| 1 Melange, green (2496—6000)
Front and back | 2 Melange, orange (2496—3000)
Front and back | 3 Melange, pink (2496—4600)
Front and back |
|--|---|---|

Greenhouse, Greenhouse Mini & Flower Tray
Designed by **Atelier 2+**

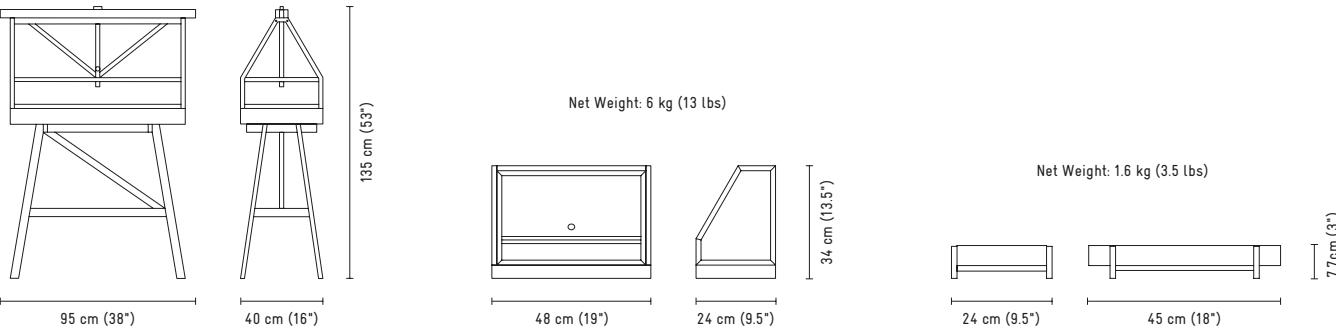
DESCRIPTION: A room within a room for nature. Designer duo Atelier 2+ have created pieces of furniture that are small enough for indoor use but large enough to house a miniature garden.

MATERIAL: Greenhouse & Greenhouse mini: Lacquered solid ash, panes of tempered safety glass, planting tray made of galvanized metal. Flower tray: Stand: Solid ash. Tray: powder coated metal tray.

OTHER INFORMATION: For indoor use only. Greenhouse: The top part and the base are sold separately. Made in Vietnam.



Net Weight: 15 kg (34 lbs)



1 Greenhouse, top part, dark grey (2356—1500)
Greenhouse, base, dark grey (2357—1500)
2 Greenhouse, top part, ash (2356—8100)
Greenhouse, base, ash (2357—8100)
3 Greenhouse mini, dark grey (2425—1500)
4 Greenhouse mini, ash (2425—8100)
5 Flower Tray, black stained ash (2518—1051)
6 Flower Tray, natural ash (2518—8151)

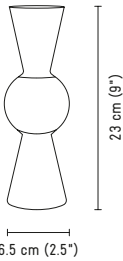
BonBon vase
Designed by **Eva Schildt**

DESCRIPTION: BonBon is inspired by the timeless shape of the amphora and is made for a small bouquet or a single flower.

MATERIAL: Mouth blown glass (white & grey 3 layers, opaque frosted).

OTHER INFORMATION: Dishwasher safe. Made in China.

Net Weight: 0.4 kg (1 lbs)

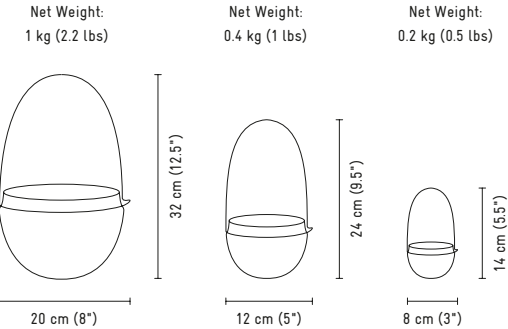


Grow greenhouse
Designed by **Caroline Wetterling**

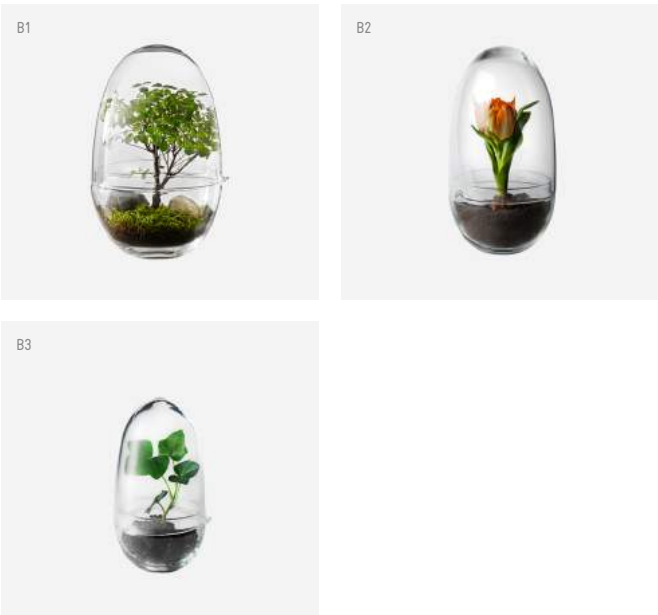
DESCRIPTION: Greenhouse in glass for the plant's first stages of life, single flowers or small groups of plants in a miniature landscape. The top part is equipped with a spout and doubles up as a water pitcher. It also regulates the moisture and temperature levels inside the greenhouse.

MATERIAL: Clear handmade glass.

OTHER INFORMATION: Dishwasher safe. Made in China.

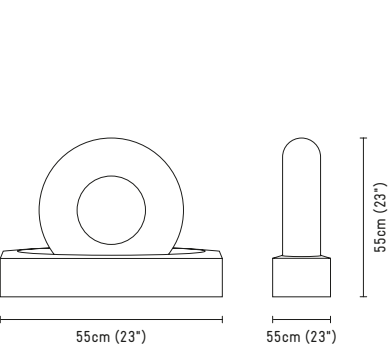


A1 BonBon, clear (2478—1000)
A2 BonBon, white (2478—0100)
A3 BonBon, grey (2478—1100)
B1 Grow, X-Large (2419—0000)



B2 Grow, large (2376—0000)
B3 Grow, small (2043—0000)

Tondo mortar and pestle
Designed by **Jessika Källeskog**



DESCRIPTION: A kitchen device used since ancient times. Tondo is both sculpture and tool. This mortar and pestle is more than just a tool for grinding herbs and spices: It will be the centrepiece of your kitchen.

MATERIAL: Marble.

OTHER INFORMATION: Hand wash only. Made in China



Melamine bowl
Designed by **Claesson Koivisto Rune**

Stockholm salad servers
Designed by **Jesper Ståhl**

DESCRIPTION: Minimalistic and functional salad bowl and servers. Combine different colours for different expressions.

MATERIAL: Melamine.

OTHER INFORMATION: Dishwasher safe. Made in China.



A1 Tondo, white/grey marble (2477—0100)

B1 Bowl, grey, Ø31 cm, H 6.5 cm (2215—1100)
Salad servers, white, L 31 cm (2307—0100)

B2 Bowl, white, Ø31 cm, H 6.5 cm (2215—0100)
Salad servers, black, L 31 cm (2307—1000)

B3 Bowl, blue, Ø31 cm, H 6.5 cm (2215—5300)
Salad servers, white, L 31 cm (2307—0100)

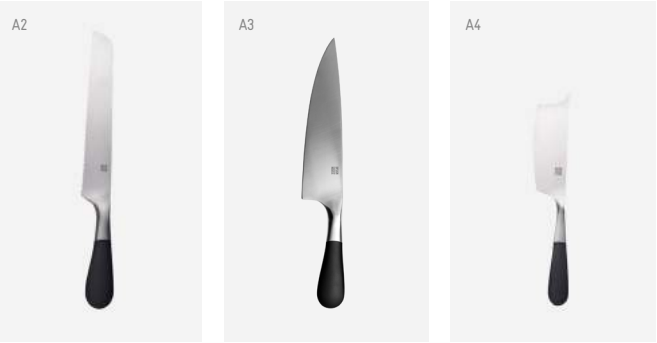
Stockholm cuttlery & knives
Designed by **Jesper Ståhl**



DESCRIPTION: The Stockholm cutlery collection combines matte-polished steel with drop-shaped black handles. To achieve the right volume, balance and weight, designer Jesper Ståhl has used hot-forged stainless steel and solid thermoplastic.

METERIAL: Stainless steel and POM (polyoxymethylene).

OTHER INFORMATION: Cutlery: Dishwasher safe. The cutlery is packed in sets of 2 pcs.

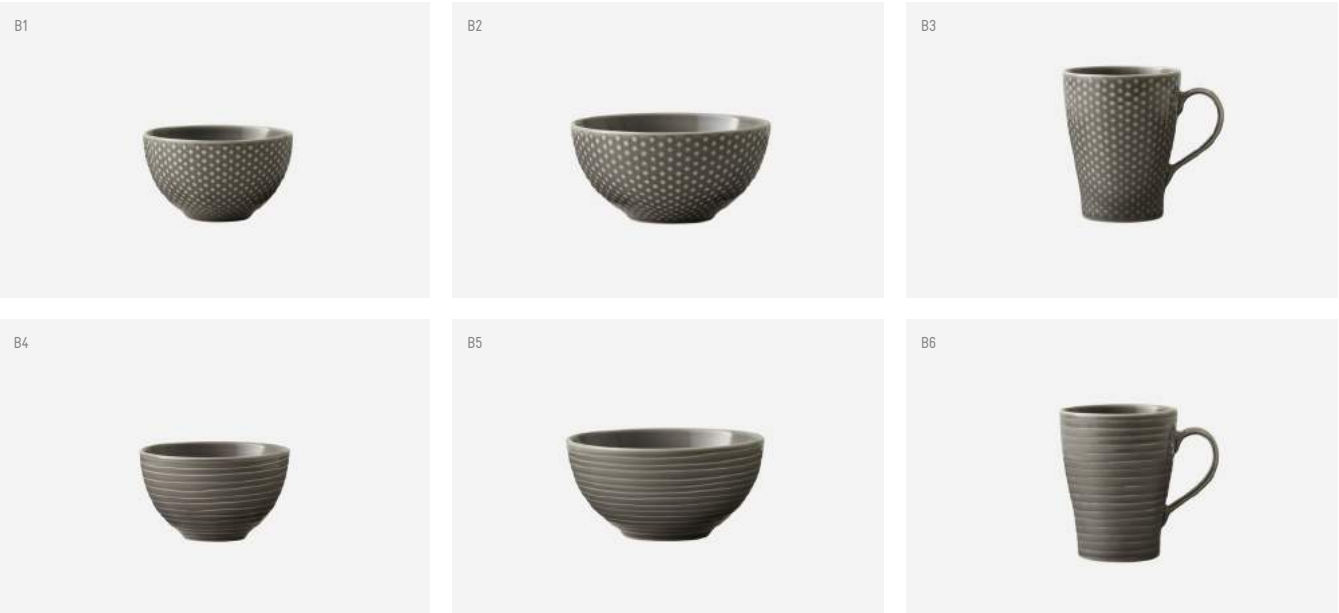


Blond dinnerware
Designed by **Reliefgruppen** with **Signe Persson-Melin**

DESCRIPTION: New colour for 2018 is grey. A raised pattern of dots and stripes adds tactility and visuality to a classic design. Blond is made of new bone china, and consists of different cups, saucers, plates and bowls.

MATERIAL: New bone china.

OTHER INFORMATION: Microwave and dishwasher safe. Made in Thailand.



A1 Coffee spoon, 14 cm (2052—8900), American tea spoon, 17 cm (2054—8900), Dinner spoon, 20 cm (2051—8900), Dinner knife, 23 cm (2049—8900), Dinner fork, 20 cm (2050—8900), Dessert knife, 20 cm (2315—8900)
Salad fork, 17 cm (2053—8900)

A2 Bread knife, 32 cm (2305—8900)
A3 Chef's knife, 32 cm (2304—8900)
A4 Cheese knife, 23 cm (2306—8900)

B1 Small bowl 30 cl Grey/Dot (1061—1102)
B2 Soup/cereal bowl 60cl Grey/Dot (1062—1102)
B3 Mug 30 cl Grey/Dot (1059—1102)

B4 Small bowl 30 cl Grey/Stripe (1061—1101)
B5 Soup/cereal bowl 60cl Grey/Stripe (1062—1101)
B6 Mug 30 cl Grey/Stripe (1059—1101)

Photographer / Brendan Austin.
Styling / Synnöve Mork.
Art direction / Jacob Bang.
Text / Jonas Asp.
Planner / Hampus Färdig.

Product images by RedWolf Studio
and Design House Stockholm.

Fonts / Gravur and DeVinne Text.
Paper / Cyclus Offset.
Printing & Repro / Strokirk — Landström,
Lidköping, Sweden.

Contact us

Head Office

Design House Stockholm
Stadsgården 6, 10 tr.
SE-116 45 Stockholm, Sweden
Phone: +46-8-509 08 100
info@designhousestockholm.com
designhousestockholm.com

Customer Service

Design House Stockholm
Stadsgården 6, 10 tr.
SE-116 45 Stockholm, Sweden
T +46-8-509 08 119
customerservice@designhousestockholm.com

Logistics & Claims

Design House Stockholm
Storgatan 2
SE-360 65 Stockholm
Phone: +46-481-190 711
erik.aronsson@designhousestockholm.com

Australia & New Zealand

Vincent 2
458 Hampton Street, Hampton 3188
Victoria, Australia
Phone: +61-3-9521 9600
Fax: +61-3-9521 9700
info@vincent2.com.au

Belgium & Luxembourg

Tradix S.A.
Rue du Mail 90—92
1050 Bruxelles, Belgium
Phone: +32-2-537 63 00
Fax: +32-2-539 19 20
b.lahaye@tradix.be

Denmark

PK Design
Staktoften 8
2950 Vedbæk, Denmark
Phone: +45-45-85 70 12
Fax: +45-44-92 26 46
office@pk-int.dk

Finland

Penello Oy
Ratsumiehentä 12
24100 Salo, Finland
Phone: +358-445 53 81 41
sari.rantanen@penello.fi

France

Joseph Living Agency
19 Quai du Pavois D'or
34200, Sete, France
Phone: +33-616-245 041
serre.gael@josephliving.fr

Germany

Scandinavia Today GmbH
(Shop & Showroom) Stephanstrasse 1—3
60313 Frankfurt, Germany
Phone: +49-69-133 83 781
design@scandinavia-today.de

Italy

Seambe SRL
Via dei Gracchi 30
201 46 Milan, Italy
Phone: +39-02-4800 5798
Fax: +39-02-4800 6697
m.bertini@seambe.it

Japan

Atex Corporation
9F, 1-4-7 Shibuya
Shibuya-ku, Tokyo 150-0002, Japan
office@atexcorp.net

Netherlands

d'Allee
Neerkantseweg 30, 5757 RM
Liessel, Netherlands
Phone: +31 6 5083 7317
info@dallee.nl

Norway

Agent Sorgenfri
Sorgenfrigata 11
0367 Oslo, Norway
Phone: +47 92 82 55 05
hj@agentsorgenfri.no

Spain & Portugal

Nord Interiors
Phone: +34-93-4510 234
Fax: +34-93-4741 5627
info@nordinteriors.com

Thailand

Unitrade House Ware Co., Ltd.
7 Soi Petchakasem 31/4
Bangwah, Phasaecharoen,
Bangkok 10160 Thailand
Phone: +662-868-9529
Fax: +662-868-9520
customerservice@unitradehouseware.com

UK & Ireland

Hyphen Design Agency Ltd
T: +44 0 778 979 0682
michelle@hyphendesignagency.com

USA & Canada

Design House Stockholm
Stadsgården 6, 10 tr.
116 45 Stockholm, Sweden
Phone: +46-8-509 08 118
brenda.olsson@designhousestockholm.com

DESIGN
Stockholm
HOUSE

@designhousestockholm
designhousestockholm.com