



WOODTAILORS
C · L · U · B



Wood Tailors Club has a complete dedication to detail and precision, conceiving a premium category of pieces. In order to tailor them, it's fundamental to combine a set of highly technical skills in wood.

Always with environment in mind, our club only use the most noble woods, combining sustainable behavior with classic techniques of production. Wood Tailors also reinforce the skills of the best Portuguese craftsmen, establishing a link for the best in design and craftsmanship.

“ For each piece built, 2 trees are planted which will allow us to contribute to the sustainable growth..”





A hand holding a wooden plank, with a wooden table and chair in the background.

LIVING ROOM

Page 11

DINING ROOM

Page 28

BEDROOM

Page 36

HOME OFFICE

Page 44

LIGHTING

Page 56

ACCESSORIES

Page 76

WOOD
TAILORS
C · L · U · B

LIVING ROOM

Page 11



CROMWELL
Side Table



BURTON
Side Table



DOUGLAS
Center Table



AUGUSTUS
Showcase



ALFRED
Center Table



RICHARD
Center Table

BEDROOM

Page 32



CHURCHILL
Nightstand



SHACKLETON
Console



CAXTON
Chest Of Drawers



TURNER
Standing Mirror

HOME OFFICE

Page 40



ALEISTER
Desk



COLLINS
Desk



DICKENS
Desk

DINING ROOM

Page 24



GEORGE
Dining Chair



EDWARD
Dining Table



HENRY
Dining Table



BLAKE
Shelf



WORDSWORTH
Bookcase

LIGHTING

Page 54



FLEMING
Wall Lamp



FARADAY
Wall Lamp



HERSCHEL
Table Lamp



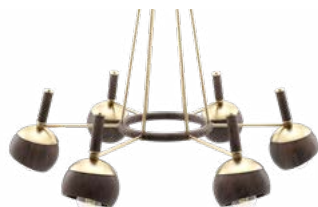
TURING
Table Lamp



HUMPHRY
Pendant



WHITTLE
Suspension Lamp



ESSEN
Suspension Lamp



CHARLES
Floor Lamp

ACCESSORIES

Page 70



MAXWELL
Tray



Cromwell

/ SIDE TABLE



The prestige and exclusivity traces of the gentlemen's clubs has been a constant for many decades. Ensuring that heritage, Cromwell Side Table invokes an imposing, yet unpretentious look, inspired in Oliver Cromwell, an English military and political leader.

Diam. 65 cm - 25.6 in. **H.** 62 cm - 24.4 in.

Materials | Structure: Oak and walnut wood.

Burton

/ SIDE TABLE



Burton Side Table Cellar's peculiar look evokes Richard Burton's genuine theatrical instinct. Burton has an unpretentious round table structure in smoked walnut wood, with a unique feature of being combined with a cylindrical cellar,

Diam. 65 cm - 25.6 in. **H.** 67 cm - 26.4 in.

Materials | Structure: Smoked walnut wood finished with natural matte varnish.

Douglas

/ CENTER TABLE

With an imponent, yet unpretentious look, Douglas Center Table will provide the exclusivity trace of a privileged club.



W. 93 cm - 36.6 in. D. 90 cm - 35.4 in. H. 37 cm - 14.6 in.

Materials | Structure: Smoked and natural walnut finished with natural matte varnish;

Alfred

/ CENTER TABLE

Alfred Center Table takes inspiration from King Alfred, one of the two English monarchs acclaimed as “The Great”.



W. 120 cm - 47.2 in. **D.** 120 cm - 47.2 in. **H.** 31 cm - 12.2 in.

Materials | Structure: Walnut wood finished with natural matte varnish;

Richard

/ CENTER TABLE

18



Richard Center Table has a stately, yet elegant round structure in smoked walnut wood and finished with natural matte varnish and a top in walnut wood, also finished with natural matte varnish and enriching details in oak.

Diam. 35 cm - 13.8 in. **H.** 120 cm - 47.2 in.

Materials | Top: walnut wood finished with natural matte varnish | Structure: Smoked walnut wood finished with natural matte varnish | Details: Oak ;



Richard Center Table

Augustus

/ SHOWCASE



Augustus Showcase is named after **Augustus Pugin**, an English architect, who is mostly known for being a pioneer in the Gothic Revival style of architecture. Pugin was given an architectural and craftsmanship training by his father, Charles Pugin.

W. 60 cm - 23.6 in. **D.** 45 cm - 17.7 in. **H.** 200 cm - 78.7 in.

Materials | Structure: Walnut wood with natural matte varnish;
Shelves: Smoked glass



Augustus Showcase

Harrison

/ SIDEBOARD

Harrison
Sideboard evokes
the soothing
essence of the
“The Quiet Beatle”,
George Harrison.





Designed for Vinyl lovers, this sideboard is strikingly handcrafted in solid walnut wood, four-legged structure with several compartments, with its matte-smoked finish, and details in rattan and genuine leather.

W. 177 cm - 69.7 in. **D.** 47 cm - 18.5 in. **H.** 76 cm - 29.9 in.

Materials | Structure: Smoked walnut wood finished with natural matte varnish;
Details | Rattan and genuine leather.



Harrison Sideboard

A wooden sideboard with a starburst pattern and a curved front. The sideboard is made of dark wood and features a prominent starburst pattern on its front panels. The front panel is curved, and the sideboard has a thick, solid top. The background is a dark, solid color.

Grant

/ SIDEBOARD

This TV unit would be an astonishing component of a traditional yet modern living room.

Grant

/ SIDEBORD

28



Wood Tailors Club got inspired by the intense way of living linked to Cary Grant. The rich hardwood used to make this piece reflects all the grandiosity in the magnate's life since he seemed to have a famous and exclusive lifestyle.

W. 216 cm - 85 in. **D.** 52 cm - 20.5 in. **H.** 57 cm - 22.4 in.

Materials | Structure: Walnut wood finished with natural matte varnish;
Details | Velvet lining and marquetry.



Grant Sideboard

Milton

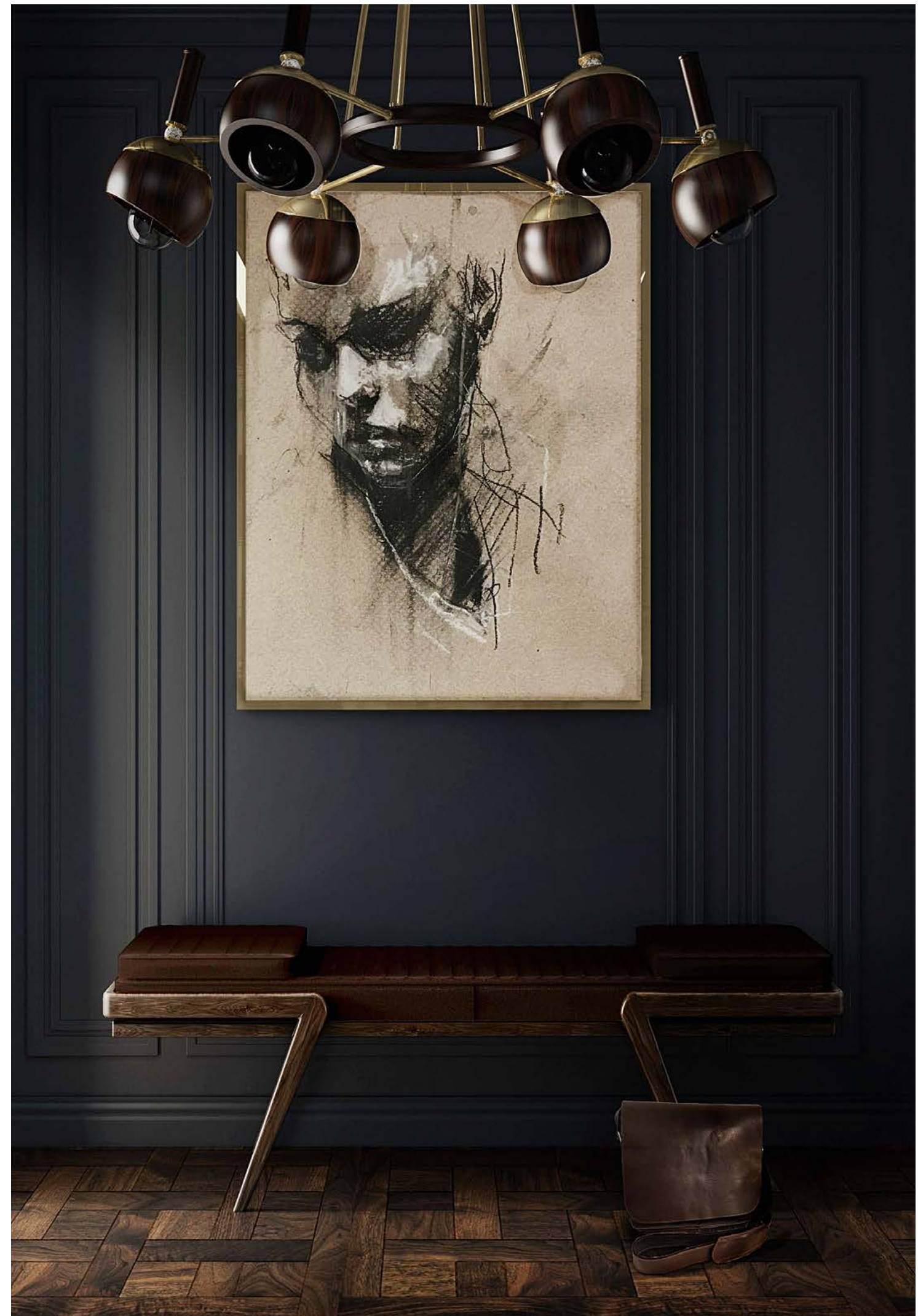
/ BENCH



Craving for that grandiosity, Milton Bench is inspired in John Milton, considered one of the most significant English authors and best known for its epic poem Paradise Lost, written in blank verse.

W. 153 cm - 60.2 in. **D.** 47 cm - 18.5 in. **H.** 49 cm - 19.3 in. **SH.** 45 cm - 17.7 in.

Materials | Structure: Smoked walnut wood finished with natural matte varnish;
Upholstery: Genuine Leather.





DINING ROOM SELECTION

George

/ DINING CHAIR



George Dining Chair is made in solid walnut wood with a rigorous handcraft expertise and its round seat upholstered in linen. Along with carefully selected wood, George is enriched with the rattan on its back giving it a classy touch.

W. 65 cm - 25.6 in. **D.** 56 cm - 22 in. **H.** 72 cm - 28.3 in. **SH.** 49 cm - 19.3 in

Materials | Structure: Walnut wood; Upholstery: Linen

Details | Rattan.

Edward

/ DINING TABLE



Edward Dining Table is inspired by the King Edward I, known for his military campaigns and responsible for significant legal and administrative reforms. Meticulously handcrafted in black stained ashwood with a rectangular four-legged structure

W. 200 cm - 78.7 in. **D.** 100 cm - 39.4 in. **H.** 76 cm - 29.9 in.

Materials | Structure: Black stained ashwood;

Details | Brushed brass.



Edward Dining Table

Henry

/ DINING TABLE



Henry Dining Table is an imposing table with an elegant look that reinterprets the controversial reign of King Henry VIII, preserving the expertise of traditional production with a modern design approach.

Diam. 170 cm - 66.9 in. **H.** 76 cm - 29.9 in.

Materials | Structure: Smoked walnut wood;
Details | Brushed brass.





BEDROOM

BEDROOM SELECTION

Churchill

/ NIGHTSTAND



Churchill Nightstand has a distinctive, imponent yet, modest look and it's meticulously handmade with rigorously selected material, allying the best in modern design and in the traditional craftsmanship.

Diam. 60 cm - 23.6 in. **H.** 30 cm - 11.8 in.

Materials | Structure : Smoked walnut wood;

Details | Genuine leather.

Shackleton

/ CONSOLE



Blending a modern design with traditional approach, Shackleton Console is minutely handcrafted in solid walnut wood with smoked and natural finishes along with its details in genuine leather.

W. 140 cm - 55.1 in. **D.** 40 cm - 15.7 in. **H.** 91 cm - 35.8 in.

Materials | Structure: Smoked walnut wood finished with natural matte varnish;
Details | Leather.



Shackleton Console



Caxton

/ CHEST



Caxton Chest of Drawers takes inspiration in the pioneer of typography in England, William Caxton. As a bedroom majestic piece, Caxton is for those who appreciate the prestigious overnight accommodations of the exclusive clubs.

W. 113 cm - 44.5 in. **D.** 51 cm - 20.1 in. **H.** 145 cm - 57.1 in.

Materials | Structure: Walnut wood finished with natural matte varnish;
Details | Brushed brass.

Turner

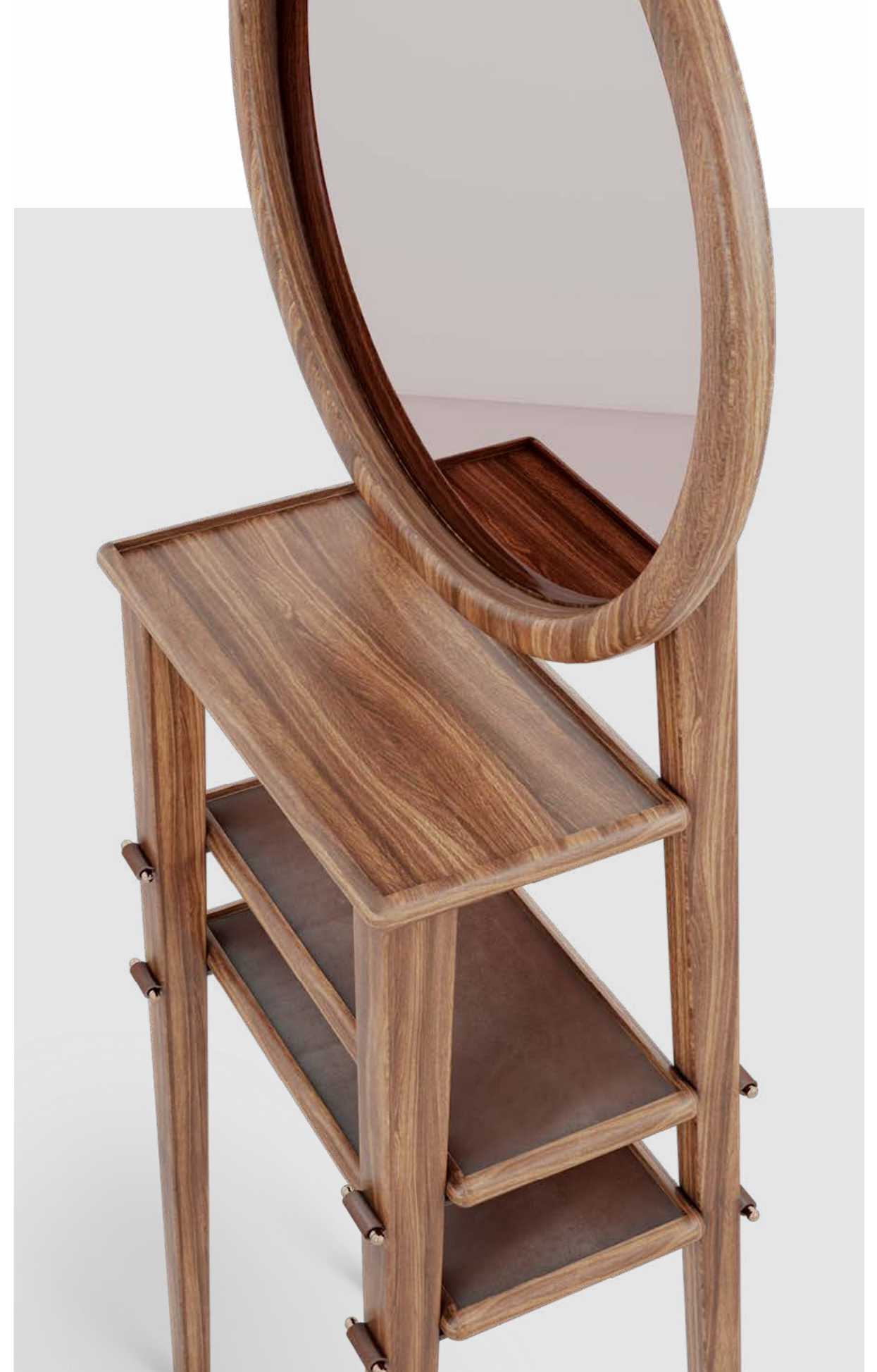
/ STANDING MIRROR



With a bronze mirror and a four-legged structure in walnut wood with natural matte varnish, Turner Standing Mirror blends the traditional expertise with a modern design approach, being enriched with details in genuine leather and polished brass.

W. 80 cm - 31.5 in. **D.** 30 cm - 11.8 in. **H.** 195 cm - 76.8 in.

Materials | Structure: Walnut wood with natural matte varnish, Bronze mirror
Details: Genuine leather, Polished brass;



Turner Standing Mirror



HOME

HOME OFFICE

HOME OFFICE SELECTION

Dickens

/ DESK



Dickens Desk was inspired in the club member and literary genius, Charles Dickens. Featuring a three-drawer division, handles free and leaning back legs, this home office desk has a majestic look, taking the aesthetic beyond in a distinctive way.

W. 120 cm - 47.2 in. **D.** 80 cm - 31.5 in. **H.** 75 cm - 29.5 in.

Materials | Structure: Smoked walnut wood finished with natural matte varnish;
Drawers: walnut wood finished with natural matte varnish.

“ The most beautiful is embroidery, with an array of techniques as vast as the countries in the world...”



Aleister

/ DESK



The prestigious gentlemen's clubs are well-known for their exclusive, diverse and versatile accommodations and so it's Aleister Crowley as well. Poet, painter, novelist and mountaineer, are a few occupations that he had.

W. 120 cm - 47.2 in. **D.** 80 cm - 31.5 in. **H.** 75 cm - 29.5 in.

Materials | Structure: Walnut wood finished with natural matte varnish.



Aleister Desk

Collins

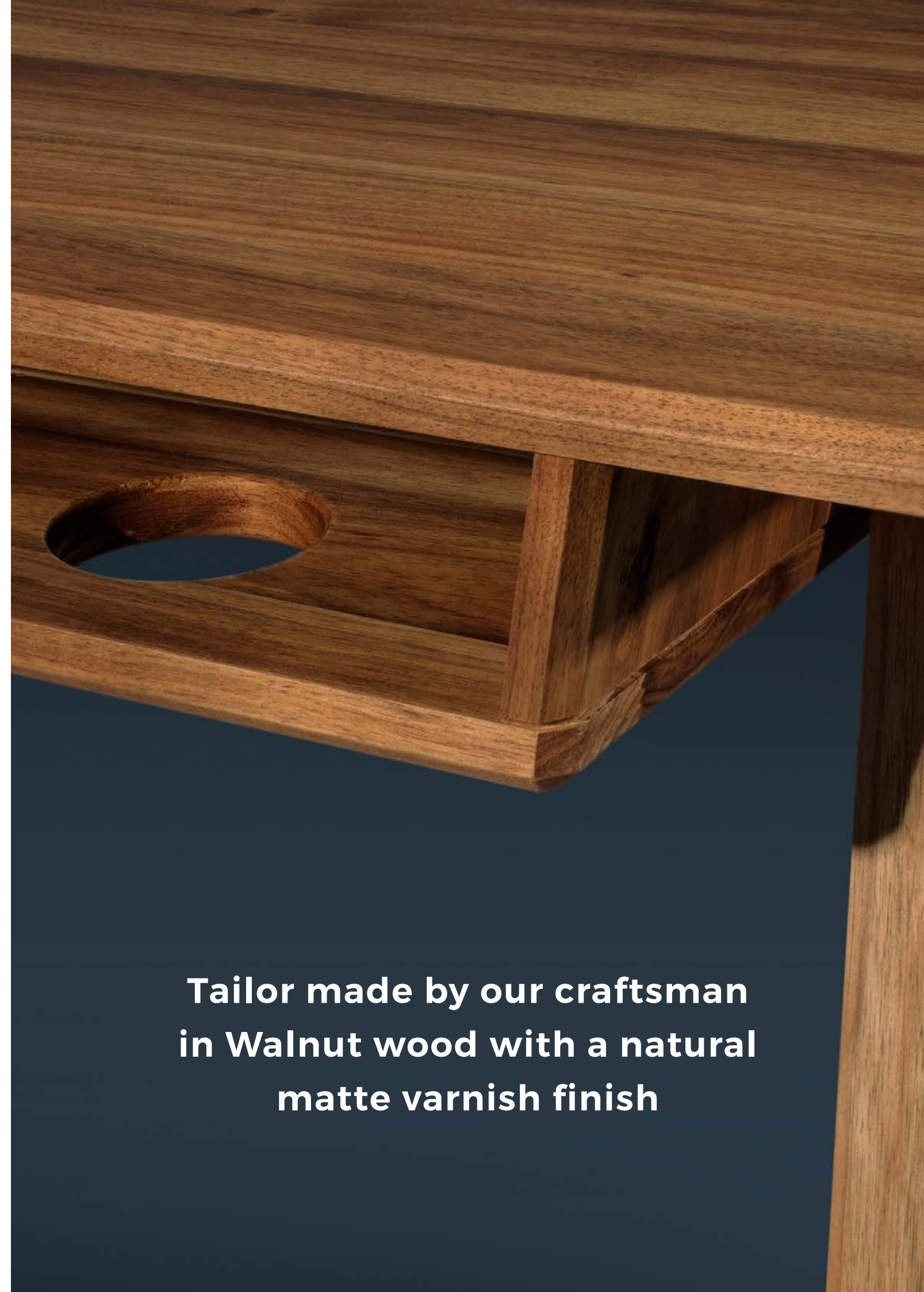
/ DESK



Recreating that secretive appealing trace, Collins Desk is inspired in the English sensation novelist, Wilkie Collins, who was also acclaimed as skilled mystery story writer and a pioneer of detective fiction.

W. 120 cm - 47.2 in. **D.** 80 cm - 31.5 in. **H.** 75 cm - 29.5 in.

Materials | Structure: Walnut wood finished with natural matte varnish.



**Tailor made by our craftsman
in Walnut wood with a natural
matte varnish finish**



Blake

/ SHELF



William Blake is a famous poet and artist, which vision, spiritually and intense work gave the Blake Ladder Shelf a name. Gentlemen's club distinguish themselves for its exclusive and singular environment. To achieve that individuality, distinctive pieces are needed and so it's Blake Ladder Shelf.

W. 170 cm - 66.9 in. **D.** 38 cm - 15 in. **H.** 215 cm - 84.6 in.

Materials | Structure: Walnut wood and oak finished with natural matte varnish;
Details | Marquetry, leather and brushed brass.



**Bookcase displays
compartments
with different sizes,
safeguarding
every gentleman's needs.**



W. 200 cm - 78.7 in. **D.** 35 cm - 13.8 in. **H.** 124 cm - 48.8 in.

Materials | Structure: Walnut wood finished with natural matte varnish.

Herschel

/ TABLE LAMP



Turing

/ TABLE LAMP



Exclusive gentlemen's club keeps tailoring their prestigious history as new members join the clubs, transmitting them their premium values. As the tradition is passed in the club's legacy, the interest in astronomy is passed down in the accomplished astronomer Sir John Herschel's family generations.

W. 19 cm - 7.5 in. **D.** 19 cm - 7.5 in. **H.** 50 cm - 19.7 in.

LAMPS. E14 x 1 / 40 W

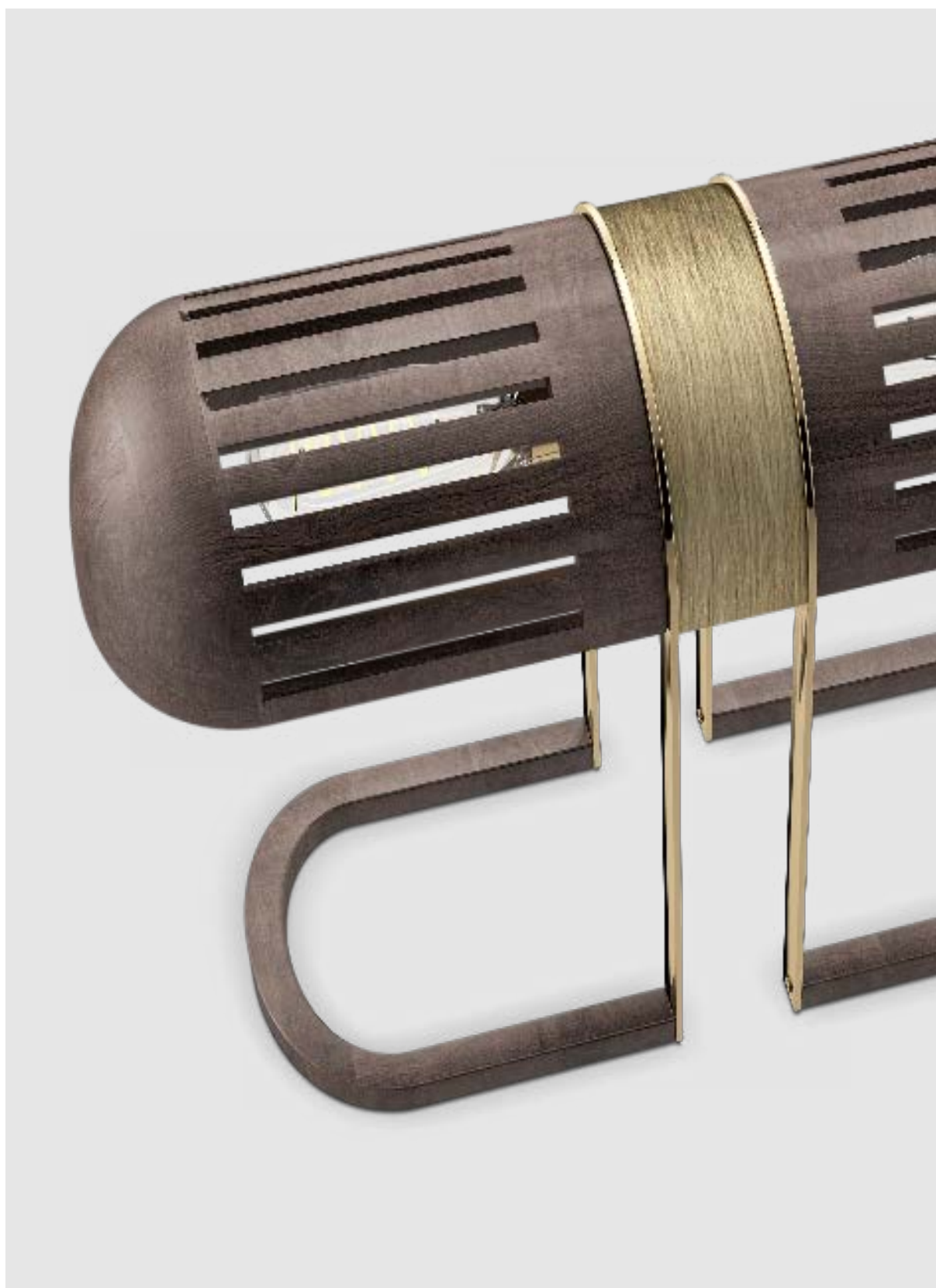
Materials | Body: Walnut wood, brushed brass;
Shade: Walnut wood, aged brushed brass.

Our Lamp has a modern Piano Lamp structure, meticulously handcrafted in aged brushed brass, polished brass and smoked walnut wood and the openings in its shade provide a refined radiance to an exclusive room. This Table Lamp compounds the most premium office atmosphere, ideal to cement business deals and strengthen relationships.

W. 40 cm - 15.7 in. **D.** 15 cm - 5.9 in. **H.** 33 cm - 13 in.

LAMPS. E14 x 2 / 40 W

Materials | Body: Walnut wood, polished brass;
Shade: Walnut wood, aged brushed brass.



Turing Table Lamp



Fleming

/ WALL LAMP

Our Lamp has a modern Piano Lamp structure, meticulously handcrafted in aged brushed brass, polished brass and smoked walnut wood and the openings in its shade provide a refined radiance to an exclusive room.

Fleming

/ WALL LAMP



W. 17.5 cm - 6.9 in. **D.** 32 cm - 12.6 in. **H.** 50 cm - 19.7 in.

LAMPS. E14 x 1 / 40 W

Materials | Body: Smoked walnut wood, aged brushed brass, textile cord;
Shade: Smoked walnut wood.



Fleming Wall Lamp



Faraday establishes the connection
between past and present, allying the
excellence in traditional expertise with
the best in design



Faraday

/ WALL LAMP



W. 25 cm - 9.8 in. D. 24 cm - 9.4 in. H. 33 cm - 13 in.

LAMPS. E14 x 1 / 40 W

Materials | Shade: Smoked walnut wood, aged brushed brass;
Body: Smoked walnut wood, aged brushed brass.

Humphry

/ PENDANT

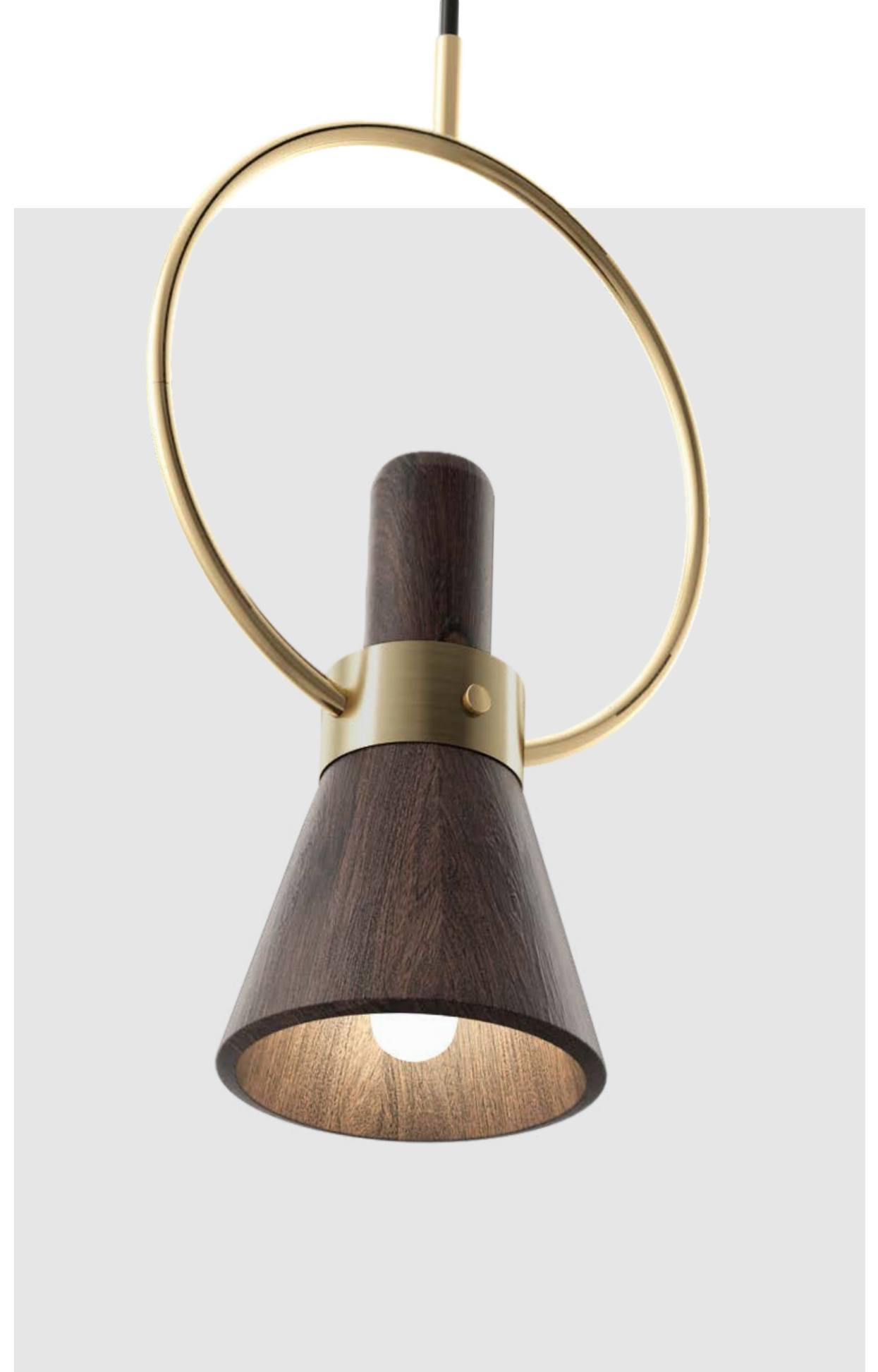


Our suspension lamp is expertly handcrafted in a brushed and aged brass rim structure, along with a rich smoked walnut wood conic shade. As Davy lamps guided miners in the caves, our suspension lamp will highlight a premium atmosphere in your exclusive room.

W. 30 cm - 11.8 in. **D.** 17.5 cm - 6.9 in. **H.** 100 cm - 39.4 in.

LAMPS. E14 x 1 / 40 W

Materials | Body: Smoked walnut wood finished with natural matte varnish, polished brass;
Shade: Smoked walnut wood finished with natural matte varnish, aged brushed brass.



Humphry Pendant



Whittle

/ SUSPENSION

“ Whittle is meticulously handcrafted,
and it has a smoked walnut along with
brushed brass... ”



Whittle is meticulously handcrafted, and it has a smoked walnut along with brushed brass. Elegance, exclusivity and status are a part of a club's trace and our clubs' Suspension Lamp delivers that elitist atmosphere from above.

W. 95 cm - 37.4 in. **D.** 57 cm - 22.4 in. **H.** 95 cm - 37.4 in.

LAMPS. E14 x 6 / 40 W

Materials | Body: Smoked walnut wood finished with natural matte varnish;
Shade: Aged brushed brass.



Essen

/ SUSPENSION

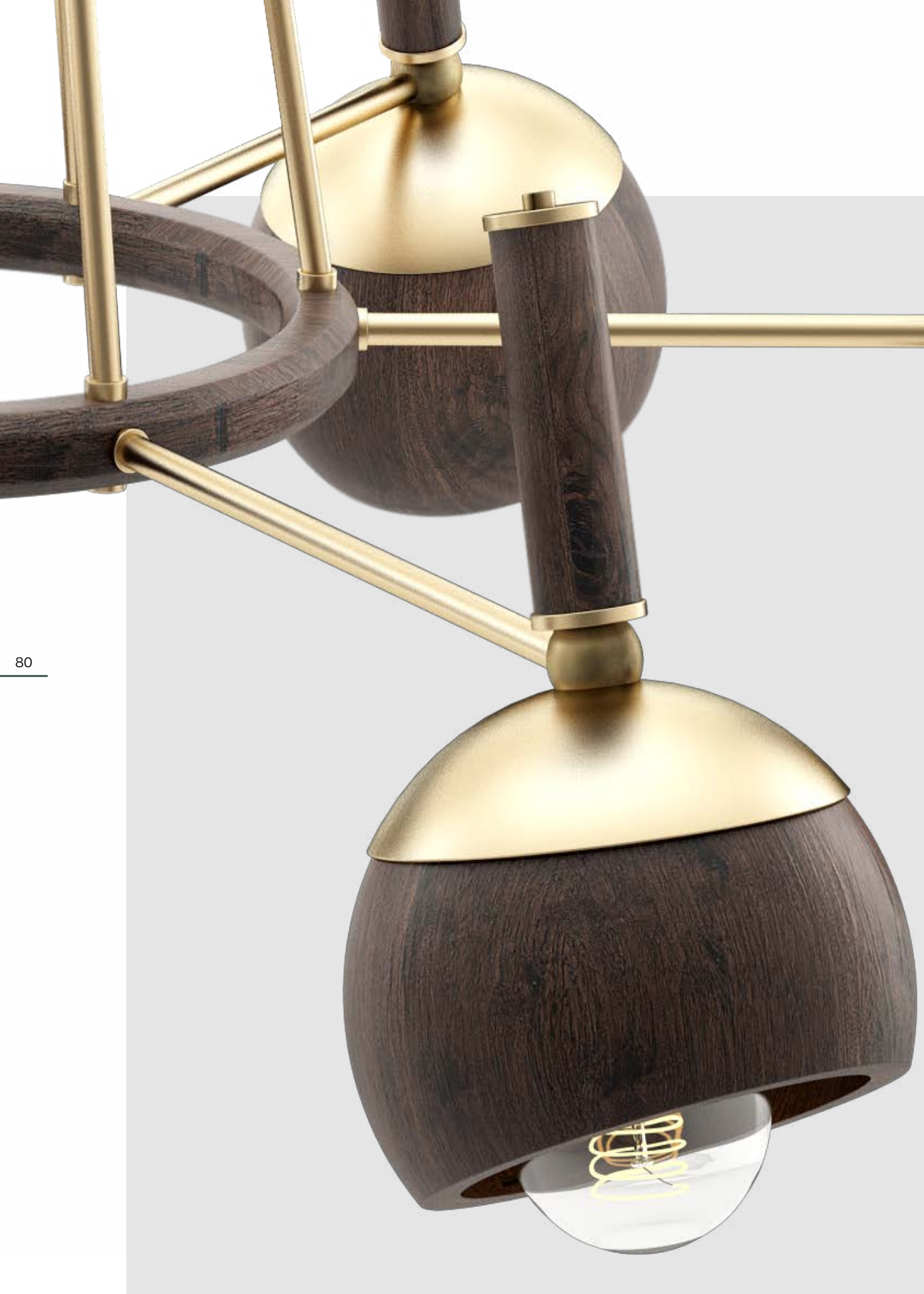


With a sumptuous look, Essen Suspension Lamp is inspired by Louis Essen, an English physicist whose most noteworthy accomplishments were in the fields of the precise measurement of time and determination of the speed of light.

Diam. 102 cm - 40.2 in. **H.** 90 cm - 35.4 in.

LAMPS. E14 x 6 / 40 W

Materials | Body: Smoked walnut wood , brushed brass;
Shade: Smoked walnut wood, brushed brass.



Essen Suspension



Charles

/ FLOOR LAMP



Charles Floor Lamp has a three-legged structure, meticulously handcrafted in walnut wood, finished with natural varnish and enlightening details in brushed brass.

Diam. 58 cm - 22.8 in. **H.** 168 cm - 66.1 in.

LAMPS. E27 x 3 / 40 W

Materials | Structure: Walnut wood with natural matte varnish, Brushed brass
Shade: Walnut wood with natural matte varnish, Brushed brass;



Charles Floor Lamp



Maxwell

/ LEATHER TRAY

Maxwell

/ LEATHER TRAY



Impeccably handcrafted in solid walnut wood along with its details in genuine leather, Maxwell Tray holds the venerable spirit of James Clerk's legacy to this day. Maxwell establishes a connection between tradition and design through a subtle, yet exquisite piece.

Diam. 40 cm - 15.7 in. **H.** 4.5 cm - 1.8 in.

Materials | Structure: Walnut wood finished with natural matte varnish;
Details: Genuine leather, brushed brass.

Humphry

/ PENDANT

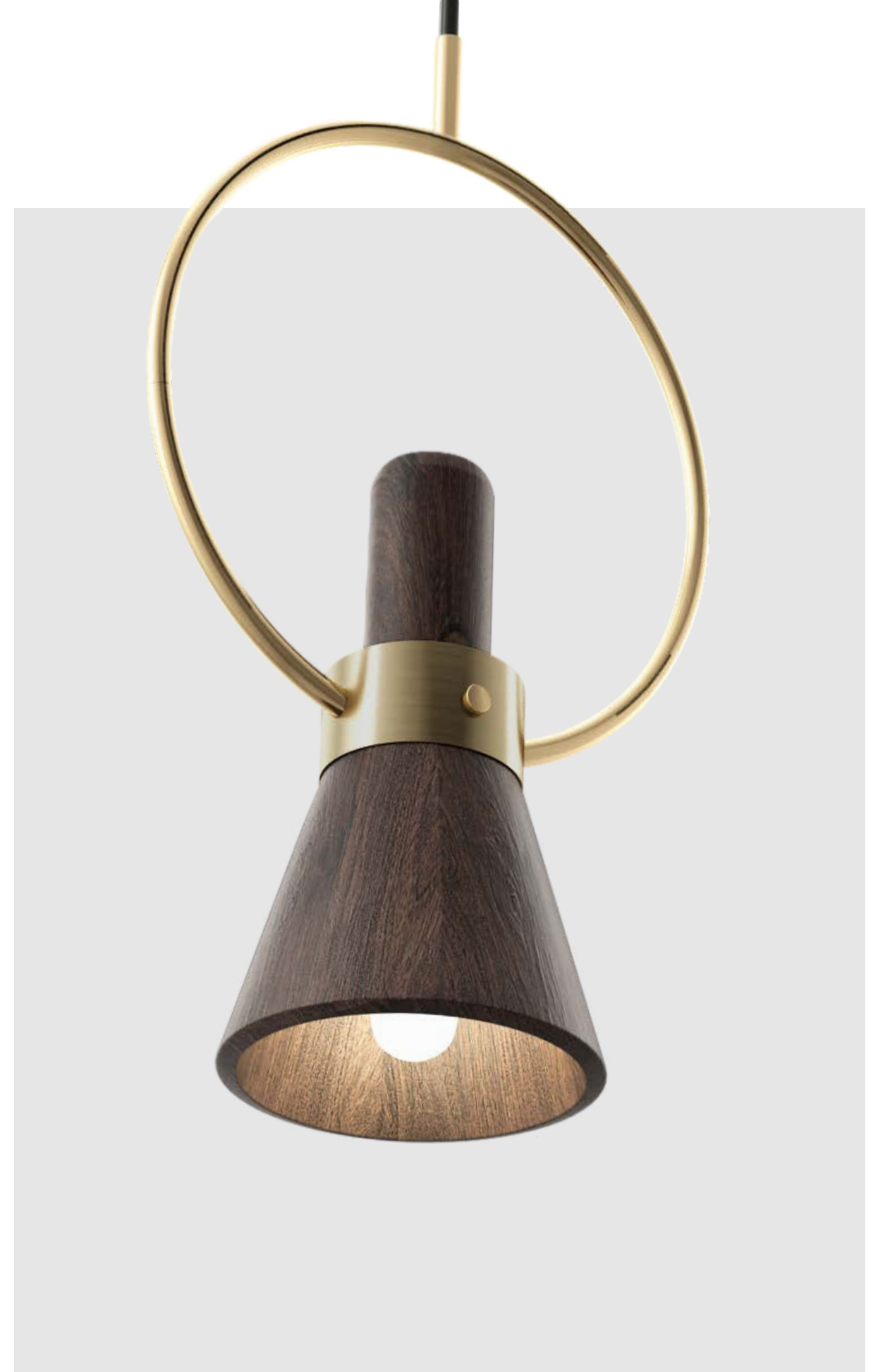


Our suspension lamp is expertly handcrafted in a brushed and aged brass rim structure, along with a rich smoked walnut wood conic shade. As Davy lamps guided miners in the caves, our suspension lamp will highlight a premium atmosphere in your exclusive room.

W. 30 cm - 11.8 in. **D.** 17.5 cm - 6.9 in. **H.** 100 cm - 39.4 in.

LAMPS. E14 x 1 / 40 W

Materials | Body: Smoked walnut wood finished with natural matte varnish, polished brass;
Shade: Smoked walnut wood finished with natural matte varnish, aged brushed brass.



Humphry Pendant





WOODTAILORS

C · L · U · B